

Highway Agency Stormwater Pollution Prevention Plan

Burlington County Bridge Commission



Jay Springer

Director, Burlington-Bristol Bridge

Burlington County Bridge Commission
1300 Route 73 North
P.O. Box 6
Palmyra, New Jersey 08065

NJPDES# NJG0148547

Last Revision Date

June 26, 2025

SPPP Table of Contents

SPPP Form 1 – SPPP Team Members (Permit cite IV.A.1.d. and IV.A.2.a.i.)	3
SPPP Form 2 – Revision History (Permit cite IV.A.2.)	4
SPPP Form 3 – Public Involvement and Participation Including Public Notice (Permit cite IV.B.1.)	5
SPPP Form 4 – Public Education and Outreach (Permit cite IV.B.2.)	6
SPPP Form 5 – Post-Construction Stormwater Management in New Development and Redevelopment Projects (Permit cite IV.B.4.)	8
SPPP Form 6 – Regulatory Mechanisms (Permit cite IV.B.5.a.)	11
SPPP Form 7 – Litter Pick-Up Program (Permit cite IV.B.5.b.i.)	13
SPPP Form 8 – Street Sweeping (Permit cite IV.B.5.b.ii-iv.)	14
SPPP Form 9 – Herbicide Application and Roadside Vegetative Waste Management (Permit cite IV.B.5.b.xii.)	22
SPPP Form 10 – Maintenance Yards and Other Ancillary Operations (Permit cite IV.B.5.c.)	24-35
SPPP Form 10 – Maintenance Yards and Other Ancillary Operations (Permit cite IV.B.5.c.)	36-48
SPPP Form 11 – Storm Drain Inlets (Permit cite IV.B.5.b.v-vi and IV.B.5.b.ix-xi)	49
SPPP Form 12 – Catch Basins (Permit cite IV.b.vii-viii)	52
SPPP Form 13 – Employee Training (Permit cite IV.B.5.d)	54
SPPP Form 14 – Mapping Outfall Pipes and Stormwater Facilities (Permit cite IV.B.6. and IV.C.1)	55
SPPP Form 15 – Outfall Pipe Inspections (Permit cite IV.B.6.c.)	62
SPPP Form 16 – Stormwater Facilities Inspection and Maintenance (Permit cite IV.C.2)	64
SPPP Form 17 – Total Maximum Daily Load (TMDL) Information (Permit cite IV.C.3.)	67
SPPP Form 18 – Additional Measures and Optional Measures (Permit cite IV.D. and IV.E.) ...	68
SPPP Form 19 – Shared or Contracted Services (Permit cite IV.A.3.)	68
LOCAL ORDINANCES	70
OUTFALL MAPS	90

SPPP Form 1 – SPPP Team Members

Stormwater Program Coordinator (SPC)	
Name Title	Gerald “Jay” Springer Director, Burlington Bristol Bridge Burlington County Bridge Commission
Office Phone Email	856-829-1900 ext. 2292 jspringer@bcbridges.org
Signature and Date	June 26, 2025
Individual Responsible for Major Development Project Stormwater Management Review Please see training requirements for stormwater management reviewers on Form 13.	
Name Title Affiliation	Michael Ott Director of Projects and Engineering Burlington County Bridge Commission
Other SPPP Team Members	
Name Title Affiliation	Frederick Gabriele Director of Maintenance Burlington County Bridge Commission
Name Title Affiliation	Sean Hasson Director of Public Safety Burlington County Bridge Commission
Name Title Affiliation	Joseph Andl Executive Director Burlington County Bridge Commission

SPPP Form 3 – Public Involvement and Participation Including Public Notice

Website where the Stormwater Pollution Prevention Plan (SPPP) is posted online:	Bcbridges.org
Physical Location and/or website where records of public notices, meeting dates, minutes, etc. are kept:	Burlington County Bridge Commission 1300 Route 73 North Palmyra, NJ 08065
Describe how the permittee complies with applicable state and local public notice requirements when providing for public participation in the development and implementation of its MS4 stormwater program:	

Introduction and Purpose

This section describes the Burlington County Bridge Commission's plan for compliance with regulations for public notice as required by the Phase II NJPDES Stormwater Regulation Program Rules (N.J.A.C. 7:14A).

Scope

For meetings when public notice is required, under the Open Public Meetings Act ("Sunshine Law," N.J.S.A. 10:4-6 et seq.), the Commission has provided in the past, and will continue to provide, public notice in a manner that complies with the requirements of that Act. Also, in regards to the passage of resolutions, the Commission has provided in the past, and will continue to provide, public notice in a manner that complies with the requirements of N.J.S.A. 40:49-1 et seq.

The full text of these laws is included in this section.

SPPP Form 4 – Public Education and Outreach

This is only required for Highway Agencies that own or operate rest areas and/or service areas.

7 Point System: Each year, Highway Agencies that own or operate rest areas and/or service areas must conduct activities related to educating the public on stormwater pollution prevention. Sample activities include posting stormwater information on their website or social media, running local ads, posting signs at green infrastructure sites, posting stormwater signs, billboards, or murals at rest/service areas, presenting a stormwater related display or materials at rest/service areas, and providing pet waste bags at rest/service areas.

Permittees must earn at least 7 points as described in Attachment B of the permit. Describe how you are meeting the minimum 7-point requirement.

Introduction and Purpose

This section describes the Burlington County Bridge Commission's "Local Public Education Program" including the required distribution of State-provided information. The goal of the program is to raise awareness and educate the Commission's employees and the users of the Commission's facilities about the impact that certain activities have on stormwater quality.

Scope

The Commission is aware that as a Highway Agency it is responsible for the duplication and annual distribution (mailing or other means of delivery) of informational brochure provided by the NJDEP to all the employees and facility users. NJDEP will provide the Commission with a brochure each year. The informational brochure covers the following topics:

1. Stormwater/Nonpoint Source Education – impact of stormwater discharges on surface and ground waters of the State and steps that the public can take to reduce pollutants in stormwater runoff.
2. Storm Drain Inlet Labeling – hazards of dumping materials into the municipal separate storm sewer system (MS4), which usually transports untreated runoff to water bodies.
3. Fertilizer/Pesticide Education –proper application, storage, and disposal of pesticides and fertilizers, and the benefits of using native or well adapted vegetation that requires little or no fertilization.
4. Waste Disposal Education – identification, proper handling, and proper disposal of wastes (including the locations of hazardous waste collection facilities in the area), and the hazards associated with illicit connections and improper disposal of waste.
5. Pet Waste Control – information regarding the pet waste control mechanism and the benefits of proper disposal of pet waste.
6. Litter Control - information regarding litter control and fines associated with littering.
7. Improper Disposal of Waste Control - information regarding the improper disposal of waste control mechanism.

8. Wildlife Feeding Control - information regarding the wildlife feeding prohibition.

Although the Commission does not own or operate any rest or service areas for public use, water education programs and water education materials in the form of brochures and pamphlets will be available for schools and the public at the Palmyra Cove Nature Park Center. The center is located on the Commission's property and is in immediate vicinity of the Tacony-Palmyra Bridge Maintenance Facility.

Each year educational materials will be distributed to the Commission's employees along with pay checks, whether it is hand delivery or emailing of the material to the employee work email address.

Additionally, appropriate local public education information can be found on Burlington County Bridge Commission's website: <http://www.bcbridges.org/home.asp>.

Sample sign:



Records: Indicate where public education and outreach records are maintained.

Palmyra Cove Nature Park/Institute for Earth Observations

Mailing Address: 1300 Route 73 North, P.O. Box 6, Palmyra NJ 08065

Physical Location (for GPS): 1335 Route 73 South, Palmyra, NJ 08065

SPPP Form 5 – Post-Construction Stormwater Management in New Development and Redevelopment Program

Major Development: How does the permittee define ‘major development’?

Approval Process: Describe the process for reviewing and approving major development project applications for compliance with the stormwater management rules at N.J.A.C. 7:8 et seq. Attach a flow chart if available. Provide the location of the mitigation plan (if one exists) to allow for alternative locations or designs.

Introduction and Purpose

This section describes the Burlington County Bridge Commission’s compliance, in general terms, with regulations for post-construction stormwater management in new development and redevelopment (post-construction program). It describes the applicable design and performance standards established under N.J.A.C. 7:8 for all major development at the Commission. It ensures adequate long-term operation and maintenance of the Commission’s stormwater facilities. It complies with standards for the design of storm inlets to restrict the passage of solids and floatables per Appendix B of the NJDEP Highway Agency permit.

Note: Projects that do not require any Department permits are not considered “new development or redevelopment projects” if construction began prior to the implementation deadline for this Statewide Basic Requirement (SBR), or if the projects went to bid prior to the date on which the permittee received authorization under this permit (February 2004).

The term “permit”, in this case, shall include transition area waivers under the Flood Hazard Area Control Act (N.J.S.A. 58:16A-50 et seq.), Freshwater Wetlands Protection Act (N.J.S.A. 13:9B-1 et seq.), Coastal Area Facility Review Act (N.J.S.A. 13:9-1 et seq.), or the Waterfront and Harbor Facilities Act (N.J.S.A. 12:5-3).

Scope

To control the quality and quantity of stormwater from new development and redevelopment projects in our county, the Commission has implemented the following program measures.

The Commission construction contract documents for projects that are **not excluded*** from the Municipal Stormwater Regulation Program include:

The provision that “All projects are to be compared in scope by the Engineer to the reach of the newly adopted NJDEP Stormwater Management Rules (N.J.A.C 7:8) and, when regulated, are to comply in full with Subchapter 5: Design and Performance Standards for Stormwater Management Measures. The Engineer is to certify to the Commission that the project has been designed in accordance with the standards, when applicable, and that the Engineer has verified that activities to be conducted during construction will not impede compliance both on the Commission’s property as well as property owned by Others.”

1. Compliance with the standards set forth in Attachment B of the Highway Agency permit to control the passage of solid and floatable materials through storm drainage inlets at the Highway Agency is required on all construction projects. The Commission has developed standard construction details for the installation and retrofit of catch basins necessitated or impacted by new development**. All storm water inlets impacted by development that are not in compliance as well as new inlets will have to conform to the standard details. Both Appendix C and the standard details have been attached.

**Exclusions consist of:*

- *An NJDEP Land Use Regulation Program permit issued prior to February 2, 2004;*
- *or in the absence of such permitting being required, for one of the local approvals listed in N.J.A.C. 7:8-1.6 pursuant to the Municipal Land Use Law (N.J.S.A. 40:55D-1 et seq.) issued prior to February 2, 2004.*

*** The Commission recognizes that regulated projects include those which are considered "Major development" per N.J.A.C. 7:8. Major development is defined as any "development" that ultimately disturbs one (1) or more acres of land or increases the impervious surface by one-quarter (1/4) acre or more. "Disturbance", for the purpose of this rule, is the placement of impervious surface or exposure and/or movement of soil or bedrock or clearing, cutting, or removing of vegetation. The following projects are reviewed for potential regulation by the Stormwater Management Rules (N.J.A.C. 7:8)*

- *Roadway resurfacing and construction*
- *The resurfacing or construction of walkways*
- *Building expansion and construction*

Specifically, we require new and impacted inlets to meet the following basic criteria:

a. Grates in Pavement or Other Ground Surfaces

Engineers and Contractors shall use either of the following grates whenever they use a grate in pavement or another ground surface to collect stormwater from that surface into a storm drain or surface water body under that grate:

1. The New Jersey Department of Transportation (NJDOT) bicycle safe grate, which is described in Chapter 2.4 of the NJDOT Bicycle Compatible Roadways and Bikeways Planning and Design Guidelines (April 1996)
2. A different grate, if each individual clear space in that grate has an area of no more than seven (7.0) square inches, or is no greater than 0.5 inches across the smallest dimension.

Examples of grates subject to this standard include grates in grate inlets, the grate portion (non-curb opening portion) of combination inlets, grates on storm sewer manholes, ditch grates, trench grates, and grates of spacer bars in slotted drains.

b. Curb-Opening Inlets (Including Curb-Opening Inlets in Combination Inlets)

Whenever design engineers use a curb-opening inlet, the clear space in that curb opening (or each individual clear space, if the curb opening has two or more clear spaces) shall have an area of no more than seven (7.0) square inches, or be no greater than two (2.0) inches across the smallest dimension.

Records: Indicate the location of approved applications for major development projects.

**Tacony Palmyra Bridge
Maintenance Building
1325 Route 73 South
Palmyra, NJ 08065**

SPPP Form 6 – Regulatory Mechanisms

Regulatory Mechanism	Date of Adoption	Website	Entity Responsible for Enforcement
1. Pet Waste Control Permit cite IV.B.5.a.i.	March 22, 2006	https://cms3.revize.com/revize/palm-yraboroughnj/Documents/Government/Codes%20and%20Ordinances/Stormwater-Pollution-Prevention-Ordinances.pdf	Burlington County Bridge Commission Police Department
2. Wildlife Feeding Control Permit cite IV.B.5.a.ii.	March 22, 2006	https://cms3.revize.com/revize/palm-yraboroughnj/Documents/Government/Codes%20and%20Ordinances/Stormwater-Pollution-Prevention-Ordinances.pdf	Burlington County Bridge Commission Police Department
3. Litter Control Permit cite IV.B.5.a.iii.	March 22, 2006	https://cms3.revize.com/revize/palm-yraboroughnj/Documents/Government/Codes%20and%20Ordinances/Stormwater-Pollution-Prevention-Ordinances.pdf	Burlington County Bridge Commission Police Department
4. Improper Disposal of Waste Permit cite IV.B.5.a.iv.	March 22, 2006	https://cms3.revize.com/revize/palm-yraboroughnj/Documents/Government/Codes%20and%20Ordinances/Stormwater-Pollution-Prevention-Ordinances.pdf	Burlington County Bridge Commission Police Department
5. Illicit Connection Prohibition Permit cite IV.B.5.a.vii.	March 22, 2006	https://cms3.revize.com/revize/palm-yraboroughnj/Documents/Government/Codes%20and%20Ordinances/Stormwater-Pollution-Prevention-Ordinances.pdf	Burlington County Bridge Commission Police Department

Introduction and Purpose

This section describes Burlington County Bridge Commission's program of establishing and enforcing regulatory mechanisms with the intent of minimizing the entrance of solids and fluids other than stormwater into the Commission's Municipal Small Separate Sewer System (MS4). These regulatory mechanisms will regulate the conduct of both the general public and Commission employees on Commission owned and operated property.

Burlington County Bridge Commission will enforce local municipal law on its property.

- 1. Pet Waste:** The Commission does not own or operate any rest areas, service areas, or any other areas along its roadways which serve the needs of the general public.
- 2. Litter:** The Commission does not own or operate any rest areas, service areas, or any other areas along its roadways which serve the needs of the general public.
- 3. Improper Waste Disposal:** The Commission does not own or operate any rest areas, service areas, or any other areas along its roadways which serve the needs of the general public.

- 4. Wildlife Feeding:** The Commission does not own or operate any rest areas, service areas, or any other areas along its roadways which serve the needs of the general public.
- 5. Palmyra Cove Nature Park:** The Commission does operate the Palmyra Cove Nature Park located in Palmyra Borough. Therefore, the Commission will enforce Palmyra Borough Ordinance 2006-06 prohibiting the feeding of un-confined wildlife and Ordinance 2006-07 regulating the disposal of pet waste.
- 6. Illicit Connections:** The Commission will report any illicit connections to its stormwater system to the appropriate municipality for enforcement per applicable municipal regulations.

The Burlington County Bridge Commission Police Department officers will enforce these ordinances. If someone is found to be in violation of an ordinance, they will be issued a written warning for first time offenses. Penalties may be issued for subsequent offenses when turned over to local authorities.

Records: Indicate the location of records associated with the regulatory mechanisms above and related enforcement actions.

**Tacony Palmyra Bridge
Maintenance Building
1325 Route 73 South
Palmyra, NJ 08065**

SPPP Form 7 – Litter Pick-Up Program

Roadside Clean-up: Describe the program and schedule for roadside clean-up of trash and debris.

Introduction and Purpose

This section describes the Burlington County Bridge Commission's litter pick up program, which includes roadside cleanup and collection of refuse from litter receptacles. The program will be implemented at all roadways and facilities owned or operated by the Commission. Its aim is to minimize the amount of trash and debris entering the state open waters either directly or through the commission's MS4.

Scope

The Commission currently performs roadside cleanup and litter collection on a weekly basis, utilizing its own maintenance staff, as a scheduled task in the Commission's *I-Compass* Maintenance Management System.

Field activities will be recorded on a *Roadside Cleanup Form* designed to record the amount of material collected, mileage cleaned, and locations where the cleanup was performed. Field data will be monitored and recorded to include the approximate amount of litter collected and will be reported to the NJDEP through the *Annual Report and Certification*. Following the scheduled activities, all activity relevant data that is required for the *Annual Report and Certification* will be reported by the Commission.

Litter pick up is not a large task, as the Commission does not currently own or operate any service areas or rest areas. The Litter Pick up program will be processed through the Commission's work order system. Litter pick-up on the portion of River Road (from Pennsauken Creek Bridge to the Twin Pipe Culvert) and the portion of Route 73 (from the Tacony-Palmyra Bridge to the County Route 543 overpass) within the Commission's jurisdiction, is being performed by the Burlington County Highway Department through which the road passes.

SPPP Form 8 – Street Sweeping

Street Locations: Attach a map or describe the location of all streets and paved parking lots that are owned or operated by the permittee.

- a. Indicate which segments of limited-access roads have storm drain inlets or discharge directly to surface water.
- b. Indicate which segments of non-limited-access roads have storm drain inlets or discharge directly to surface water.
- c. Indicate which segments of roads do not have storm drain inlets or do not discharge directly to surface water.

Introduction and Purpose

This section describes the Burlington County Bridge Commission's street sweeping and roadside erosion control maintenance programs which target materials that contribute to the pollution and siltation of waterways. Stormwater carries debris and pollutants directly into our water sources which can also endanger the lives of humans, animals, and plant life.

Scope - Street Sweeping

The Commission currently performs street sweeping on a biweekly basis, utilizing its own maintenance staff, as a scheduled task in the Commission's *I-Compass* Maintenance Management System. Street sweeping is documented and recorded utilizing *Street Sweeping Forms*, which are designed for field use by equipment operators. Based on permit requirements, the Commission has mapped all paved areas that must be swept on a monthly basis. The Commission is responsible for its own monthly street sweeping maintenance.

The minimum permit requirement entails the monthly sweeping of service areas, maintenance yards, and all Commission owned or operated curbed streets (including roads or highways) with storm drains that have a posted speed limit of 35 mph or less. *The Street Sweeping Form* has been developed for reporting purposes and contains the following information: the date and area of sweeping, the operator's name, and the total miles swept. Sweeping volumes are recorded daily. The mapping was developed to assist the Commission maintenance staff in scheduling and tracking the sweeping activities.

Scope - Road Erosion Control Maintenance

The Commission will use its maintenance staff to monitor the roads and parking areas for erosion problems. Roadside inspections will be documented on a *Road Erosion Control Maintenance Form* processed through the Commission's work order system. The form was developed for inspection documentation and erosion level prioritization purposes. Mapping of erosion locations will also help identify negative trends regarding run-off velocities. The Commission is required to regularly inspect and maintain the stability of shoulders, embankments, ditches, and soils along these streets to ensure that they are not eroding and contributing to sedimentation of receiving waters. All identified erosion problems will be reported and repairs will be scheduled accordingly. The Commission's maintenance staff will be assigned to complete minor repairs, while major repairs may require an engineering solution. All of the areas identified as having road erosion problems will be repaired in accordance with the *Standards for Soil Erosion and Sediment Control in New*

Jersey. The status of the Road Erosion Maintenance Program will be included in the Annual Report and Certification. Incidents of roadside erosion are reported and recorded.

Note that gully erosion along roadway shoulders are frequently remedied with 2-inch crushed stone over Mirafi™ N-Series filter fabric (or an equivalent).



0 10 20 30 40 Feet

UNOFFICIAL COPY FOR REVIEW ONLY. NOT FOR CONSTRUCTION.
PROJECT NUMBER:
P2020-001
PALM BEACH, FLORIDA

TACOMA, WASHINGTON
DATE: 04/21/2020



U.S. POST OFFICE BOX 900000
SEATTLE, WASHINGTON 98108-0000
ATTENTION: DIRECTOR
P.O. BOX 8
PALMYRA, NEW YORK
06258-0008
CITY OF NEW YORK
NEW YORK 10007-0007
NEW YORK, NEW YORK

74E 04/2/2009



0 50 100 200 300 Feet

W 1995-1996 ARMY CORPS OF ENGINEERS
SOUTH COASTAL DISTRICT
SOUTH COASTAL DISTRICT
FOR ASSESSMENT
PRIORITY PROJECT
CONSTRUCTION PROJECT
SOUTH COASTAL DISTRICT

DATE: 04/21/2009



0 50 100 200 300 Feet

W 19501-19500 AVENUE CORPORAITE DEVELOPMENT
 SHELBY COUNTY STATE COMMISSION
 PROJECT NUMBER
 PROJECT LOCATION

SHEET 11 OF 12
 SHEET SCHEDULE MAP

DATE: 04/21/2025



0 50 100 200 300 Feet

UNOFFICIAL AGENCY PREPARED FOR THE
SUNSHINE COUNTY STATE COMMISSION
FOR THE
FACILITY DESIGN
FOR THE
SUNSHINE COUNTY
SUNSHINE COUNTY

DATE: 04/21/2025



0 100 200 300 Feet

W. 100th STREET AND W. 101st STREET
S. 100th STREET AND S. 101st STREET
S. 100th STREET AND S. 101st STREET
S. 100th STREET AND S. 101st STREET

SEE PLANS FOR
SITE SPECIFIC

DATE

DATE 04/21/2025



0' 100' 200' 300' Feet

W 19001-19000 AGENCY FORMERLY DESIGNATED
SPECIALTY COUNTY SITE CONSULTANT
FOR 300-1
PALM BEACH COUNTY

011-1000-1000-1000
SPECIALTY COUNTY

DATE: 04/21/2009

SPPP Form 9 – Herbicide Application and Roadside Vegetative Waste Management

Herbicide Application Management: Describe the program for ensuring the proper application of herbicides. Include details about how the permittee ensures that herbicides are not washed into waters of the State and how they prevent erosion caused by de-vegetation.

Introduction and Purpose

This section describes the Burlington County Bridge Commission's plan to limit the washing of mulch and chemicals into the state's open waters. The purpose of this program is to implement methods and procedures for reducing or eliminating the amount of mulch that is used to control roadside erosion and protect new roadside plantings, and to limit chemical applications or select alternate methods used for controlling roadside vegetation.

Scope

In accordance with the *Highway Agency Stormwater General Permit*, the Commission will no longer apply herbicides outside the prescribed two-foot radius of any structure for which it is impractical to mow around (such as around guardrails, signposts, telephone poles, etc.). If mulch is applied, it will be stabilized in accordance with the *Standards for Soil Erosion and Sediment Control in New Jersey* (N.J.A.C. 2:90-1) to prevent those materials from being washed away with stormwater flow into the waters of the State.

The Commission's maintenance staff shall apply, when possible, herbicides that pose a reduced water pollution risk (this does not remove the restriction on herbicide use and application). Roadside areas will be planted with lower maintenance, native wild flowers in hopes of improving aesthetics and reducing the amount of labor that would go into taking care of plants, including the mowing of "wet" areas and areas with steep slopes.

The Commission will use its own maintenance staff to maintain the vegetation along its roads, and any vegetative growth that may negatively affect other stormwater facilities, such as open stormwater conveyance ditches and outfalls. Designated personnel handling mulch and herbicides while performing roadside vegetation management will be trained to properly apply these products.

Note that vendors are not to sell herbicides or pesticides to the agency unless there is someone there with an application license. Small quantities of herbicides and pesticides purchased at local retail sources are not regulated.

Roadside Vegetative Waste Management: Describe the program for ensuring that wood waste and yard trimmings generated by the permittee are not blown or deposited into stormwater facilities, e.g., storm drain inlets and basins.

Wood waste and yard trimmings include the following: tree parts, brush, wood chips, leaves, untreated/unpainted lumber, and grass clippings.

Burlington County Bridge Commission does not store any wood waste or yard trimmings. All materials will be either taken away by waste contractor or transported to the Burlington County Landfill for proper disposal or recycling.

SPPP Form 10 – Maintenance Yards and Other Ancillary Operations

Complete a separate Form 10 for each yard/location. This includes but is not limited to all maintenance yards, impound yards, fueling locations, and yard trimming/wood waste management sites.

1. Address of maintenance yard or ancillary operation

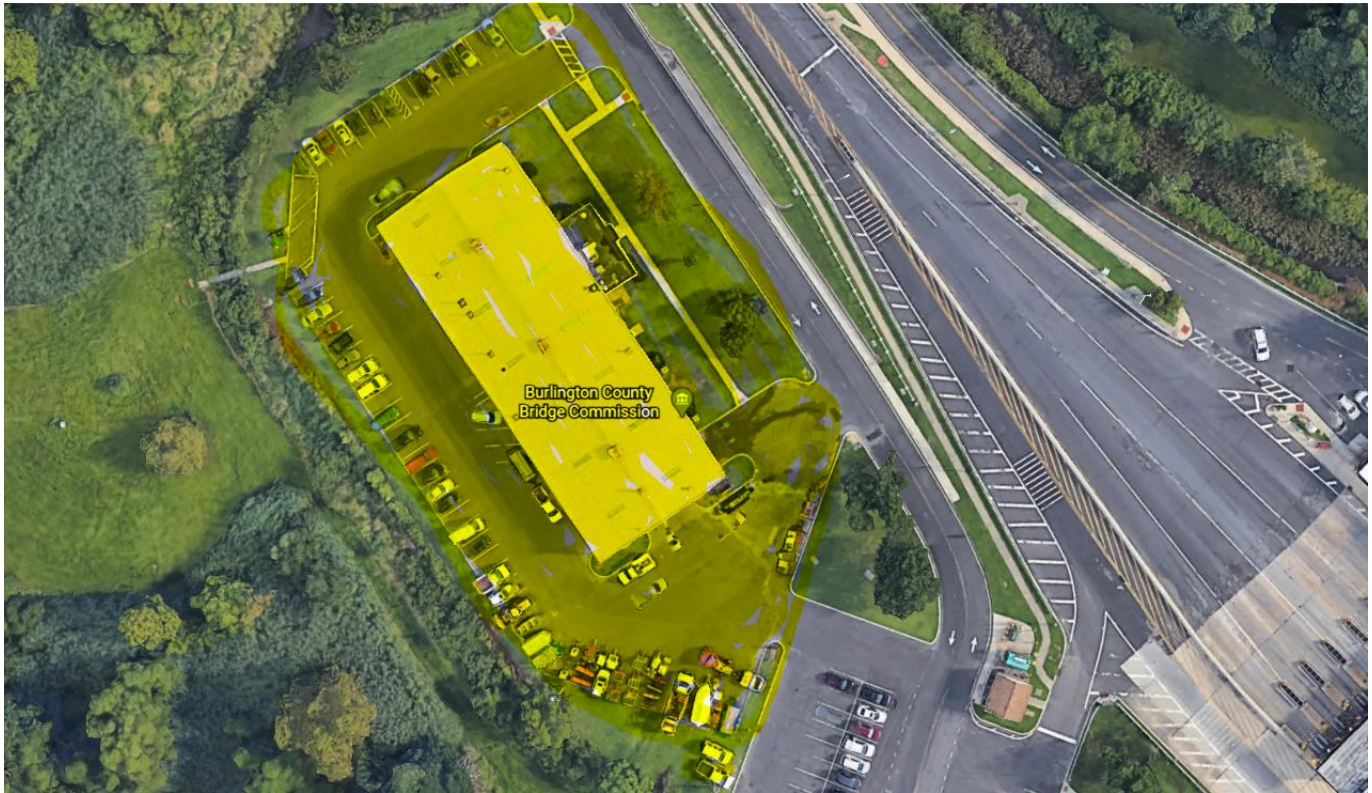
TACONY PALMYRA BRIDGE MAINTENANCE BUILDING AND YARD

1325 Route 73 South

Palmyra, NJ 08065

(MAINTENANCE BUILDING AND YARD HIGHLIGHTED)

(WINTER MATERIAL STORAGE BAY UNDER BRIDGE BY MAINTENANCE YARD)



2. List all materials that are exposed to stormwater which could be a source of pollutants in a stormwater discharge. Indicate what type of container the materials are in, if they are covered, what they are placed upon, and if the area is graded or contained by berms. This includes, but is not limited to, raw materials, intermediate products, final products, waste materials, by-products, fuels, lubricants, solvents, and detergents. For example, brine, fertilizer, used oil, refuse containers, etc.

BURLINGTON COUNTY BRIDGE COMMISSION

INVENTORY LIST

The following materials are stored at the Tacony-Palmyra Bridge Maintenance Yard:

Materials (stored indoors unless otherwise indicated):

- 550-gallon diesel backup fuel tank with pump
- 55 gallon drums of motor oil
- 300-gallon used motor oil tank
- 50 pound bags of MAG® calcium chloride deicing pellets
- 1-gallon and 5-gallon containers of paint
- Various automotive and housekeeping supplies (windshield washing fluid, glass cleaners, etc.)
- Cargil Road Salt (road salt storage area under the bridge)
- Sand (road salt storage area under the bridge)
- 50 pound bags of Asphalt cold patch
- Vehicle Wash Station

The following materials are stored at the Burlington-Bristol Bridge Maintenance Yard:

Materials (stored indoors unless otherwise indicated):

- 275-gallon backup diesel fuel tank with pump
- 50 pound bags of MAG® calcium chloride deicing pellets
- 1-gallon and 5-gallon containers of paint
- Various automotive and housekeeping supplies (windshield washing fluid, glass cleaners, etc.)
- Cargil Road Salt (In Maintenance Garage November to April)
- 50 pound bags of Asphalt cold patch

3. List all machinery that is exposed to stormwater which could be a source of pollutants in a stormwater discharge.

The following is a list of Commission equipment and vehicles in the maintenance areas.

EQUIPMENT No.	DESCRIPTION
COMP-04	RAM AIR COMPRESSOR
COMP-05	SULLAIR AIR COMPRESSOR
COMP-08	INGERSOLL RAND AIR COMPRESSOR
LOADER-TPB	WA-200-6 KOMATSU WHEEL LOADER
WHEEL LOADER-TPB	CAT 26 WHEEL LOADER
LOADER-BBB	JOHN DEERE 324KX FRONT END LOADER M05010
TRACTOR-4	JOHN DEERE 2320 TRACTOR LOADER
LT-02	PORTABLE LIGHT TOWER/GENERATOR
LT-03	PORTABLE LIGHT TOWER/GENERATOR
LT-04	PORTABLE LIGHT TOWER/GENERATOR
TRAILER-001	ENCLOSED ELECTRICAL TRAILER
TRAILER-007	TOW BEHIND AIR COMPRESSOR
TRAILER-008	PORTABLE LIGHT TOWER/GENERATOR
TRAILER-009	PORTABLE LIGHT TOWER/GENERATOR
TRAILER-0010	TOW BEHIND TAR POT
TRAILER-0011	PORTABLE LIGHT TOWER/GENERATOR
TRAILER-012	POLICE RADAR
TRAILER-013	POLICE RADAR
TRAILER-014	SCORPION ATTENUATOR
TRAILER-015	VMS SIGN
TRAILER-016	VMS SIGN
TRAILER-017	VMS SIGN
TRAILER-018	VMS SIGN
TRAILER-019	ARROW BOARD
TRAILER-020	ARROW BOARD
TRAILER-021	PORTABLE GENERATOR
TRK-01	2017 FORD F450 DUMP TRUCK - CG5ABN
TRK-02	2017 FORD F450 DUMP TRUCK - CG4ABN
TRK-03	2018 FORD F150 PICK UP TRUCK-CG9ABN
TRK-04	2019 FREIGHTLINER DUMP TRUCK
TRK-05	2019 FREIGHTLINER DUMP TRUCK
TRK-06	2019 FORD 750 SAFETY TRUCK
TRK-07	2019 FORD F350 UTILITY TRUCK
TRK-08	2022 FORD F250 - PICK UP TRUCK
TRK-09	2022 FORD F250 - PICK UP TRUCK

TRK-10	2022 FORD F250 - PICK UP TRUCK
TRK-11	2024 BUSCHER MUNICIPAL V65T SWEEPER
TRK-30	2000 FORD F650 SD BUCKET TRUCK
TRK-46	2009 FORD E350 SD UTILITY TRUCK
TRK-47	2011 FORD F450 4X4 UTILITY TRK
TRK-49	2012 FORD F250 SD 4X4 PICKUP
TRK-52	2013 FORD F150 PICKUP
TRK-53	2013 FORD F150 PICKUP
TRK-54	2014 FREIGHTLINER / ALTEC BUCKET TRUCK
TRK-56	2015 FORD F250 4X4 PICKUP
TRK-57	2021 INT CV515SFA 4x4 MED SIZE DUMP TRUCK
TRK-58	2021 INTERNATIONAL HV507 LARGE DUMP TRUCK
VWS	VEHICLE WASH STATION
VWS-HWPW	VEH WASH STA. HOT WATER PRESSURE WASHER
VWS-OWS	VEH WASH STATION OIL /WATER SEPERATER
862-GEN-T1-115KW	GENERATOR, GODWIN, TRAILER 1, 115KW, 862 2011
4. Describe the procedures for cleaning spills and disposing of clean-up waste. Indicate the location of materials used for cleaning, e.g., kitty litter, sawdust, etc.	
5. For each category below, describe the best management practices in place to ensure compliance with all requirements in the permit.	
<ul style="list-style-type: none"> a. Fueling Operations b. Discharge of Stormwater from Secondary Containment c. Vehicle Maintenance d. On-site Equipment and Vehicle Washing/Wastewater Containment e. Salt and De-icing Material Storage and Handling f. Aggregate Material and Construction Debris Storage g. Street Sweepings, Catch Basin Clean Out and Other Material Storage h. Yard Trimmings and Wood Waste Management 	

Burlington County Bridge Commission

Standard Operating Procedures (SOPs)

Tacony-Palmyra Bridge Maintenance Yard

Fueling Operations

Introduction and Purpose

Gasoline spillage results in polluted stormwater. Vehicle and equipment fueling procedures and practices at our back up diesel fueling pumps are designed to minimize spills and the resultant discharge of polluted stormwater to surface or ground waters. Understanding proper fueling procedures for vehicles, mobile fuel tanks, and storage tanks is critical. Safety is always the priority.

Scope

These procedures are to be implemented at all maintenance yards with fueling, including mobile fueling operations. Fueling includes all motor vehicles, mowers, tractors, portable equipment and mobile fuel storage containers.

Standards and Specifications For Vehicle and Equipment Fueling

- The vehicle engine shall be off.
- Ensure that the fuel is the proper type of fuel.
- Verify that absorbent spill clean-up materials and spill kits are available in the fueling area.
- Nozzles used in vehicle and equipment fueling shall be equipped with an automatic shut-off to prevent overfill.
- Fuel tanks shall not be “topped-off”.
- Mobile fueling is not permissible. Whenever practical, vehicles and equipment shall be transported to the designated fueling area in the maintenance garage. Fueling of equipment, such as pumps and mowers, is permitted at job site as required. All precautions shall be taken for proper fueling.
- Clearly post, in a prominent area of the facility, instructions for safe operation of fueling equipment and signage indicating restricted activities.
- Clearly post, in all hazardous fluid transfer areas, signage indicating location and type of spill cleanup equipment, disposal locations for used cleanup material, and appropriate contact information for the person(s) responsible for spill response. Spill kits must be clearly visible and have an access clear of obstructions at all times.
- Prior to fueling, floor drains should be protected with temporary absorbent booms and/or flexible rubber mats.
- When the remaining diesel fuel in the 550 gallon storage tank reaches the refill reorder point, the vendor will refill the tank to 90% capacity.
- Fuel shall only be dispensed to approved mobile storage containers. Containers should not be filled to more than 90% capacity (no “topping off”).

Standards and Specifications **(for bulk refueling)**

- Drip pans or absorbent pads shall be used under all hose and pipe connections and other leak-prone areas during bulk refueling.
- Protect fueling areas with berm and/or dikes to prevent run-on, runoff, and to contain spills.
- Tank trucks, used for bulk transfer, must be contained with temporary berms or temporary absorbent booms during the transfer process. While Temporary berms are being used, all hose connection points associated with the transfer of fuel must be within the temporary berms.
- A trained employee must always be present to supervise during bulk transfer.

Spill Response **(gasoline, fuel, and other hazardous substances)**

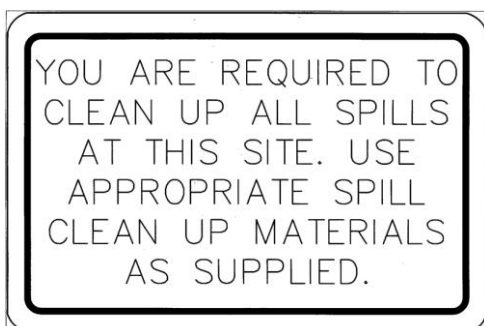
- Conduct cleanups of any fuel spills immediately after discovery.
- Uncontained spills are to be cleaned using dry cleaning methods only. Spills shall be cleaned up with PIG® Universal Mat Pads, PIG® Blue Socks, or a dry, absorbent material (e.g., kitty litter, sawdust, etc.). Absorbent materials shall be swept up.
- Collected waste is to be disposed of properly. Generated spill waste weighing less than 220 lbs. must be sealed in chemical resistant containers and can be disposed of at a regular waste land fill. Generated spill waste weighing 220 lbs. or more must be disposed of at a hazardous waste facility.
- Contact the Burlington County Bridge Commission Police Dispatchers.

A spill is defined as the escape and deposition of any substance, fluid, or solid caused by the malfunction or failure of any equipment or by the intentional or unintentional upset or improper use of its proper container. Spills include: overtopped gas tanks or gas containers, leaking hoses, soaking cooling systems leaking oil or brake fluid.

Maintenance and Inspection

- Fueling area and storage tank shall be inspected monthly.
- Keep an ample supply of spill cleanup material on the site.
- Any equipment, tanks, pumps, piping and fuel dispensing equipment found to be leaking or in disrepair must be repaired or replaced immediately. No such equipment shall be operated until permanently repaired. Temporary repairs may only be used to prevent additional leakage or to mitigate potential hazards.
- Power to fueling pump must be disconnected until leak is repaired. **Lock Out-Tag Out** procedures apply.

Sample sign:



Burlington County Bridge Commission Standard Operating Procedures (SOPs) Tacony-Palmyra Bridge Maintenance Yard Vehicle Maintenance

Introduction and Purpose

This SOP contains the basic practices of vehicle maintenance to be implemented at all maintenance yards, including maintenance activities at ancillary operations, in Burlington County Bridge Commission. The purpose of this SOP is to provide a set of guidelines for Burlington County Bridge Commission employees assigned to maintenance yards.

Scope

These procedures are to be implemented at all maintenance yards, including maintenance activities at ancillary operations, within Burlington County Bridge Commission.

Standards and Specifications For Vehicle Maintenance

- Conduct vehicle maintenance operation only in designated areas clearly marked with appropriate signs.
- When possible, perform all vehicle and equipment maintenance at an indoor location with a paved floor.
- Always use drip pans.
- Absorbent spill clean-up material shall be available in maintenance areas and shall be disposed of properly after use.
- Outdoor maintenance areas shall be protected from stormwater run-on and runoff, and shall be located at least 50 feet downstream of drainage facilities and watercourses.
- Use portable tents or construct a roofing-device over long-term maintenance areas and for projects that must be performed outdoors.
- Do not dump or dispose oils, grease, fluids, lubricants, solvents, and detergents onto the ground.
- Do not dump or dispose batteries, used oils, antifreeze, and other toxic fluids into a storm drain or watercourses.
- Do not bury tires.
- Collect waste fluids in properly labeled containers and dispose properly.
- All vehicle and equipment washing must be performed at indoor designated areas only. Clearly mark designated areas with the appropriate sign(s).

Spill Response
(gasoline, fuel, and other hazardous substances)

- Provide spill kits and instructions at all emergency maintenance sites.
- Provide spill containment dikes or secondary containment around stored oils and other fluid storage drum(s).
- Conduct cleanups of any fuel spills immediately after discovery.
- Spills are to be cleaned using dry cleaning methods only. Spills shall be cleaned up with PIG® Universal Mat Pads, PIG® Blue Socks, or a dry, absorbent material (e.g., kitty litter, sawdust, etc.). Absorbent materials should be swept and disposed of properly.
- Collected waste is to be disposed of properly.
- Contact the Burlington County Bridge Commission Police Dispatchers.

A spill is defined as the escape and deposition of any substance, fluid, or solid caused by the malfunction or failure of any equipment or by the intentional or unintentional upset or improper use of its proper container. Spills include: overtopped gas tanks or gas containers, leaking hoses, soaking cooling systems leaking oil or brake fluid.

Maintenance and Inspection

- Periodically check for leaks and damaged equipment. Make repairs as necessary at the appropriate location.
- Inspect vehicle parking areas for spilled or leaked materials. Clean up as required and complete necessary maintenance indoors immediately.
- Immediately report and repair all vehicles and equipment leaking fluids.

Sample signs:



Burlington County Bridge Commission Standard Operating Procedures (SOPs) Tacony-Palmyra Bridge Maintenance Yard Good Housekeeping Practices

Facilities

1. Maintenance Garage
2. Salt Storage

Introduction and Purpose

This SOP contains the basic practices of good housekeeping to be implemented at maintenance yards, including maintenance activities at ancillary operations, in Burlington County Bridge Commission. The purpose of this SOP is to provide a set of Good Housekeeping guidelines for Burlington County Bridge Commission employees at their maintenance yards.

Scope

These procedures apply to all maintenance yards, including maintenance activities at ancillary operations, within Burlington County Bridge Commission and are meant to augment the currently enforced Right-to-Know procedures.

Standards and Specifications for Good Housekeeping

- All containers should be properly labeled and marked. The labels must remain clean and visible.
- All containers must be kept in good condition and tightly closed when not in use.
- When practical, chemicals, fluids, and supplies should be kept indoors.
- If containers are stored outside, they must be covered and placed on spill platforms.
- Keep storage areas clean and well organized.
- Spill kits and drip pans must be kept near any liquid transfer areas, protected from rainfall.
- Absorbent spill clean-up materials must be available in maintenance areas and shall be disposed of properly after use.
- Place trash, dirt, and other debris in the dumpster.
- Collect waste fluids in properly labeled containers and dispose of them properly.
- Establish and maintain a recycling program by disposing papers, cans, and bottles, in designated bins at all Burlington County Bridge Commission work sites.

Standards and Specifications
(salt and de-icing material handling)

- During loading and unloading of salt and de-icing materials, prevent and/or minimize spills. If salt or de-icing materials are spilled, remove the materials using dry cleaning methods. All collected materials shall be either reused or properly discarded.
- Sweeping should be conducted once a week to get rid of dirt and other debris. Sweeping should also be conducted immediately following loading/unloading activities, when practical.
- Minimize the tracking of material from storage and loading/unloading areas.
- Minimize the distance that salt and de-icing materials are transported during loading/unloading activities.
- Any materials that are stored outside must be tarped when not actively being used.
- If interim seasonal tarping is being implemented, de-icing materials may be stored outdoors only between October 15th through April 30th.

Spill Response
(gasoline, fuel, and other hazardous substances)

- Conduct clean up of any spill(s) immediately after discovery.
- Spills are to be cleaned using PIG® Universal Mat Pads, PIG® Blue Socks, or other dry cleaning methods only.
- Contact the Burlington County Bridge Commission Police Dispatcher.

A spill is defined as the escape and deposition of any substance, fluid, or solid caused by the malfunction or failure of any equipment or by the intentional or unintentional upset or improper use of its proper container. Spills include: overtopped gas tanks or gas containers, leaking hoses, soaking cooling systems leaking oil or brake fluid.

Maintenance and Inspection

- Periodically check for leaks and damaged equipment and make repairs as necessary.
- Perform monthly inspections of all (indoor and outdoor if applicable) storage locations.
- Perform monthly inspections of refuse containers and dumpsters for damaged covers and leaks.

On-Site Equipment and Vehicle Washing/Wastewater Containment

See permit for certification and log forms for Underground Storage Tanks.

- Burlington County Bridge Commission vehicles located at the Tacony Palmyra Bridge are washed at the Tacony Palmyra Maintenance Wash Station.
- Burlington County Bridge Commission gives permission as a shared service to the county and local government to have vehicles washed at the wash station. At present the Cinnaminson and Maple Shade Boards of Education uses this service for bus washing.

Salt and De-icing Material Storage and Handling

Introduction and Purpose

Below is a description of Burlington County Bridge Commission's current salt and deicing materials storing practices and the inspection schedule for the storage areas. The goal of this program is to minimize the amount of salt and deicing materials that enter the Commission's municipal separate storm sewer system (MS4) and are eventually discharged into state open waters.

Scope

Burlington County Bridge Commission has two permanent salt storages. Salt storage at the Burlington-Bristol Bridge Maintenance Yard is located inside the Maintenance Garage building and completely conforms to all NJDEP requirements.



The Tacony-Palmyra Bridge Maintenance Yard road salt storage is located under the Tacony-Palmyra Bridge deck. The walls are extended vertically to the bridge deck, thus completely enclosing three sides, with an industrial strip curtain door on the entrance side of the salt storage. Note that the Commission also stores sand in the road salt storage facility. The sand and road salt piles are placed adjacent to one another. Topsoil, mulch, and crushed stone piles are located next to the bridge's

south abutment and are enclosed with concrete barriers. The piles are distanced 60 feet from the nearest water body. There is no stormwater conveyance structures in the area. An inspection and clean-up (if necessary) will be conducted after every loading and unloading operation of salt and/or other de-icing materials. Any salt or de-icing materials used in a storm event will be placed back into storage 72 hours after the end of the event.

Aggregate Material and Construction Debris Storage

Burlington County Bridge Commission will have little to no aggregate materials or construction debris. Most debris removal will be the responsibility of the Assigned Contractor. If debris generated by the Burlington County Bridge Commission will be transported to the County Landfill.

Street Sweepings, Catch Basin Clean Out, and Other Material Storage

Street sweepings are dumped into a dedicated dumpster located at the Tacony Palmyra Bridge Maintenance Yard.

Catch Basin Clean Out material are dumped into a dedicated dumpster at the Tacony Palmyra Bridge Maintenance Yard.

Waste in the dedicated dumpster is periodically pick up by a Designated Contractor.

Yard Trimmings and Wood Waste Management

Yard trimmings and wood waste is disposed of at the Burlington County Landfill.

Records: Indicate the location of inspection logs and tracking forms associated with this maintenance yard or ancillary operation, including documentation of conditions requiring attention and remedial actions that have been taken or planned. Documentation should include the date and time of inspection, the name of the person conducting the inspection, and relevant findings.

**Burlington Bristol Bridge
Administration Building
348 Conover Street
Burlington, NJ 08016**

**Tacony Palmyra
Maintenance Building
1325 Route 73 South
Palmyra, NJ 08065**

SPPP Form 10 – Maintenance Yards and Other Ancillary Operations

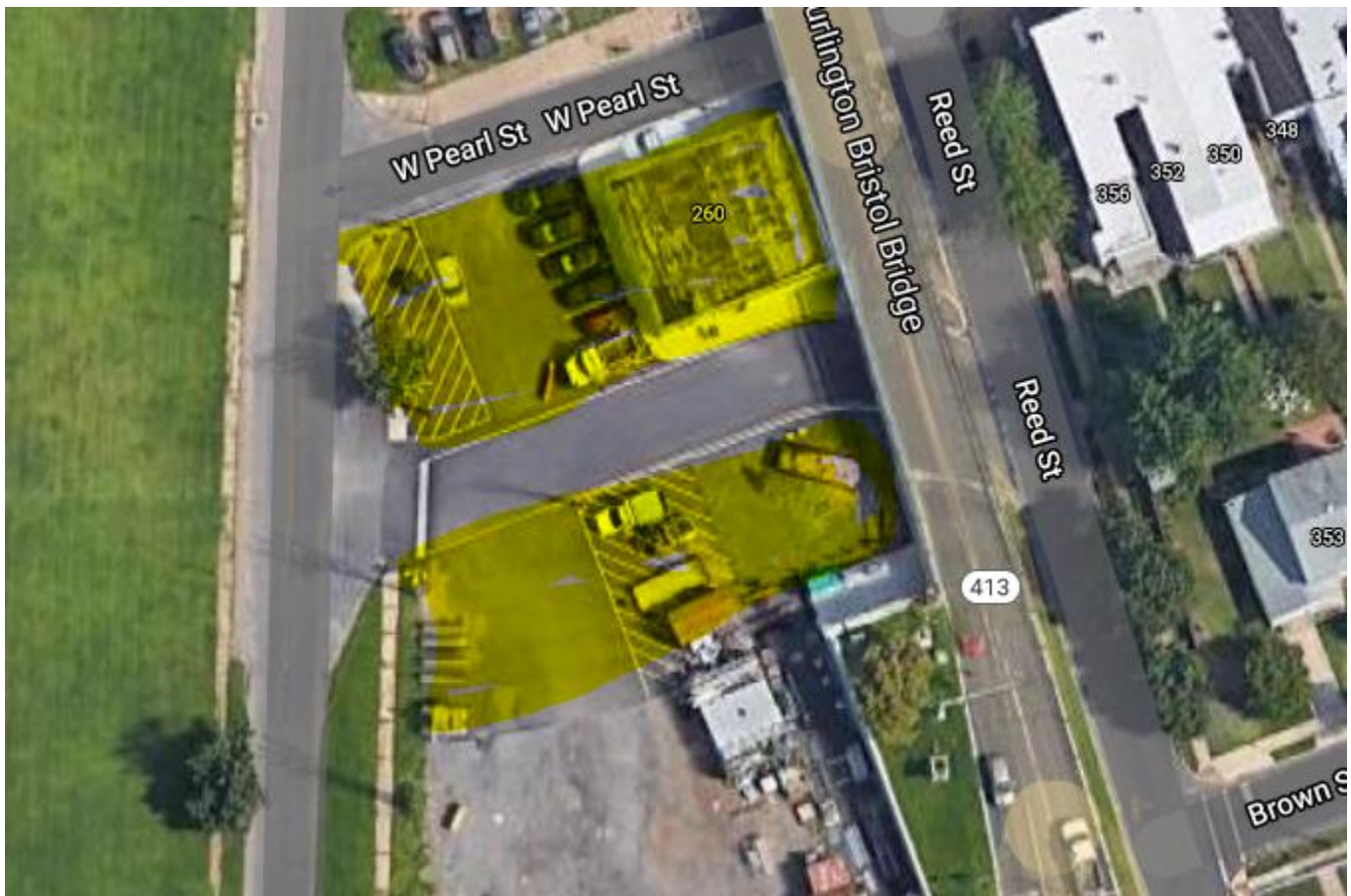
Complete a separate Form 10 for each yard/location. This includes but is not limited to all maintenance yards, impound yards, fueling locations, and yard trimming/wood waste management sites.

**BURLINGTON BRISTOL BRIDGE
MAINTENANCE BUILDING AND YARD**

260 Reed Street

Burlington, NJ 08016

(MAINTENANCE BUILDING AND YARD HIGHLIGHTED)



The following materials are stored at the Burlington-Bristol Bridge Maintenance Yard:

Materials (stored indoors unless otherwise indicated):

- 275-gallon backup diesel fuel tank with pump
- 50-pound bags of MAG® calcium chloride deicing pellets
- 1-gallon and 5-gallon containers of paint
- Various automotive and housekeeping supplies (windshield washing fluid, glass cleaners, etc.)
- Cargil Road Salt (In Maintenance Garage November to April)
- 50-pound bags of Asphalt cold patch

Burlington County Bridge Commission Standard Operating Procedures (SOPs) Burlington-Bristol Bridge Maintenance Yard Vehicle and Equipment Fueling

Facilities

1. Back Up Diesel Fueling Pump

Introduction and Purpose

Gasoline spillage results in polluted stormwater. Vehicle and equipment fueling procedures and practices are designed to minimize spills and the resultant discharge of polluted stormwater to surface or ground waters. Understanding proper fueling procedures for vehicles, mobile fuel tanks, and storage tanks is critical. Safety is always the priority.

Scope

These procedures are to be implemented at all maintenance yards with fueling, including mobile fueling operations. Fueling includes all motor vehicles, mowers, tractors, portable equipment, and all mobile storage containers.

Standards and Specifications For Vehicle and Equipment Fueling

- The vehicle engine shall be off.
- Ensure that the fuel is the proper type of fuel.
- Verify that absorbent spill clean-up materials and spill kits are available in the fueling area.
- Nozzles used in vehicle and equipment fueling shall be equipped with an automatic shut-off to prevent overfill.
- Fuel tanks shall not be “topped-off”.
- Mobile fueling is not permissible. Whenever practical, vehicles and equipment shall be transported to the designated fueling area in the maintenance garage. Fueling of equipment, such as pumps and mowers, is permitted at job site as required. All precautions shall be taken for proper fueling.

- Clearly post, in a prominent area of the facility, instructions for safe operation of fueling equipment and signage indicating restricted activities.
- Clearly post, in all hazardous fluid transfer areas, signage indicating location and type of spill cleanup equipment, disposal locations for used cleanup material, and appropriate contact information for the person(s) responsible for spill response. Spill kits must be clearly visible and have an access clear of obstructions at all times.
- Prior to fueling, floor drains should be protected with temporary absorbent booms and/or flexible rubber mats.
- When the remaining diesel fuel the 550 gallon storage tank reaches the refill reorder point, the vendor will refill the tank to 90% capacity.
- Fuel shall only be dispensed to the approved mobile storage containers. Containers should not be filled to more than 90% capacity (no “topping off”).

Standards and Specifications **(for bulk refueling)**

- Drip pans or absorbent pads shall be used under all hose and pipe connections and other leak-prone areas during bulk refueling.
- Protect fueling areas with berm and/or dikes to prevent run-on, runoff, and to contain spills.
- Tank trucks, used for bulk transfer, must be contained with temporary berms or temporary absorbent booms during the transfer process. While Temporary berms are being used, all hose connection points associated with the transfer of fuel must be within the temporary berms.
- A trained employee must always be present to supervise during bulk transfer.

Spill Response **(gasoline, fuel, and other hazardous substances)**

- Conduct cleanups of any fuel spills immediately after discovery.
- Uncontained spills are to be cleaned using dry cleaning methods only. Spills shall be cleaned up with PIG® Universal Mat Pads, PIG® Blue Socks, or a dry, absorbent material (e.g., kitty litter, sawdust, etc.). Absorbent materials shall be swept and disposed of properly.
- Collected waste is to be disposed of properly. Generated spill waste weighing less than 220 lbs. must be sealed in chemical resistant containers and can be disposed of at a regular waste land fill. Generated spill waste weighing 220 lbs. or more must be disposed of at a hazardous waste facility.
- Contact the Burlington County Bridge Commission Police Dispatcher.

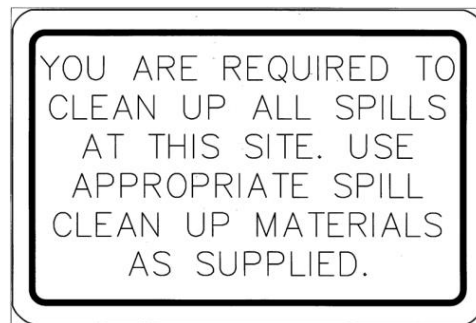
A spill is defined as the escape and deposition of any substance, fluid, or solid caused by the malfunction or failure of any equipment or by the intentional or unintentional upset or improper use of its proper container. Spills include: overtopped gas tanks or gas containers, leaking hoses, soaking cooling systems leaking oil or brake fluid.

Maintenance and Inspection

- Fueling areas and storage tanks shall be inspected monthly.

- Keep an ample supply of spill cleanup material on the site.
- Any equipment, tanks, pumps, piping, and/or fuel dispensing equipment that is found to be leaking or in disrepair must be repaired or replaced immediately. No such equipment shall be operated until it is permanently repaired. Temporary repairs may only be used to prevent additional leakage or to mitigate potential hazards.
- Power to the fueling pump must be disconnected until leak is repaired. **Lock Out-Tag Out** procedures apply.

Sample sign:



Burlington County Bridge Commission Standard Operating Procedures (SOP) Burlington-Bristol Bridge Maintenance Yard Vehicle Maintenance

Facilities

1. Maintenance Garage

Introduction and Purpose

This SOP contains the basic practices of vehicle maintenance to be implemented at all maintenance yards, including maintenance activities at ancillary operations, in Burlington County Bridge Commission. The purpose of this SOP is to provide a set of guidelines for Burlington County Bridge Commission employees assigned to maintenance yards.

Scope

These procedures are to be implemented at all maintenance yards, including maintenance activities at ancillary operations, within Burlington County Bridge Commission.

Standards and Specifications For Vehicle Maintenance

- Vehicle and equipment maintenance is not permitted at this facility. Clearly post signs prohibiting any regular maintenance or washing of vehicles and equipment.
 - Regular maintenance shall be performed at the Tacony-Palmyra Bridge Maintenance Facility.
 - Regular vehicle washing shall be performed at the Tacony-Palmyra Bridge Maintenance Facility wash bay or a commercial car wash.

In an event when emergency maintenance is required on site:

- When possible, perform all vehicle and equipment maintenance at an indoor location with a paved floor.
- Always use drip pans.
- Absorbent spill clean-up material shall be available on site, and shall be disposed of properly after use.
- Emergency outdoor maintenance areas shall be protected from stormwater run-on and runoff, covered with a portable tent or other temporary roofing device, and shall be located at least 50 feet downstream of drainage facilities and watercourses.
- Do not dump or dispose oils, grease, fluids, lubricants, solvents, and detergents onto the ground.
- Do not dump or dispose batteries, used oils, antifreeze, and other toxic fluids into a storm drain or watercourses.

Collect waste fluids in properly labeled containers and dispose properly.

Spill Response

(gasoline, fuel, and other hazardous substances)

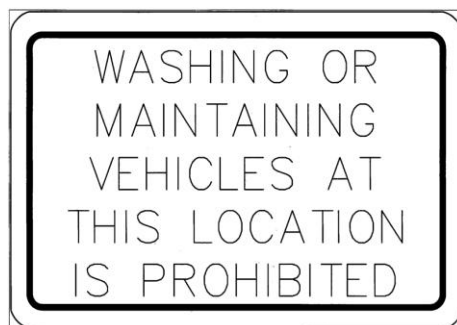
- Provide spill kits and instruction at all maintenances sites.
- Provide spill containment dikes or secondary containment around stored oils and other fluid storage drum(s).
- Conduct cleanups of any fuel spills immediately after discovery.
- Spills are to be cleaned using dry cleaning methods only. Spills shall be cleaned up with PIG® Universal Mat Pads, PIG® Blue Socks, or a dry, absorbent material (e.g., kitty litter, sawdust, etc.). The rest of the area is to be swept.
- Collected waste is to be disposed of properly.
- Contact the County of Burlington Police Dispatcher.

A spill is defined as the escape and deposition of any substance, fluid, or solid caused by the malfunction or failure of any equipment or by the intentional or unintentional upset or improper use of its proper container. Spills include: overtopped gas tanks or gas containers, leaking hoses, soaking cooling systems leaking oil or brake fluid.

Maintenance and Inspection

- Periodically check for leaks and damaged equipment and make repairs as necessary.
- Inspect vehicle parking areas for spilled or leaked materials. Clean up as required and complete necessary maintenance indoors immediately.
- Immediately report and repair all vehicles and equipment leaking fluids.

Sample sign:



Burlington County Bridge Commission Standard Operating Procedures (SOP) Burlington-Bristol Bridge Maintenance Yard Good Housekeeping Practices

Facilities

1. Maintenance Garage
2. Salt Storage

Introduction and Purpose

This SOP contains the basic practices of good housekeeping to be implemented at maintenance yards, including maintenance activities at ancillary operations, in Burlington County Bridge Commission. The purpose of this SOP is to provide a set of Good Housekeeping guidelines for Burlington County Bridge Commission employees at their maintenance yards.

Scope

These procedures apply to all maintenance yards, including maintenance activities at ancillary operations, within Burlington County Bridge Commission and are meant to augment the currently enforced Right-to-Know procedures.

Standards and Specifications for Good Housekeeping

- All containers should be properly labeled and marked. The labels must remain clean and visible.
- All containers must be kept in good condition and tightly closed when not in use.
- When practical, chemicals, fluids, and supplies should be kept indoors.
- If containers are stored outside, they must be covered and placed on spill platforms.
- Keep storage areas clean and well organized.
- Spill kits and drip pans must be kept near any liquid transfer areas, protected from rainfall.
- Absorbent spill clean-up materials must be available in maintenance areas and shall be disposed of properly after use.
- Place trash, dirt, and other debris in the dumpster.
- Collect waste fluids in properly labeled containers and dispose of them properly.
- Establish and maintain a recycling program by disposing papers, cans, and bottles, in designated bins at all Burlington County Bridge Commission work sites.

Standards and Specifications (salt and de-icing material handling)

- During loading and unloading of salt and de-icing materials, prevent and/or minimize spills. If salt or de-icing materials are spilled, remove the materials using dry cleaning methods. All collected materials shall be either reused or properly discarded.
- Sweeping should be conducted once a week to get rid of dirt and other debris. Sweeping should also be conducted immediately following loading/unloading activities, when practical.
- Minimize the tracking of material from storage and loading/unloading areas.
- Minimize the distance that salt and de-icing materials are transported during loading/unloading activities.
- Any materials that are stored outside must be tarped when not actively being used.
- If interim seasonal tarping is being implemented, de-icing materials may be stored outdoors only between October 15th through April 30th.

Spill Response (gasoline, fuel, and other hazardous substances)

- Conduct clean up of any spill(s) immediately after discovery.
- Spills are to be cleaned using PIG® Universal Mat Pads, PIG® Blue Socks, or other dry cleaning methods only.
- Contact the County of Burlington Police Dispatcher.

A spill is defined as the escape and deposition of any substance, fluid, or solid caused by the malfunction or failure of any equipment or by the intentional or unintentional upset or improper use of its proper container. Spills include: overtopped gas tanks or gas containers, leaking hoses, soaking cooling systems leaking oil or brake fluid.

Maintenance and Inspection

- Periodically check for leaks and damaged equipment and make repairs as necessary.
- Perform monthly inspections of all (indoor and outdoor if applicable) storage locations.
- Perform monthly inspections of refuse containers and dumpsters for damaged covers and leaks.

Burlington County Bridge Commission Standard Operating Procedures (SOPs) All Locations Improper Disposal of Waste

Policy

In order to protect the public health, safety and welfare, it is the policy of the Burlington County Bridge Commission (BCBC) to:

- Prohibit the spilling, dumping and disposal by the BCBC and its employees of materials other than stormwater flows to the Municipal Separate Stormwater Sewer Systems (MS4) at all BCBC facilities.
- Prescribe penalties for failure to comply.

The following procedures shall be applied universally at all BCBC facilities and locations:

Introduction and Purpose

Improper dumping, spilling or disposal of materials in stormwater systems results in the pollution of the state's open waters and ground waters. These procedures and practices are established to prohibit or minimize all such improper disposal and direct all BCBC personnel to:

- Eliminate intentional dumping or disposal of improper materials into BCBC stormwater facilities.
- Take all necessary precautions to minimize and mitigate accidental spills.
- Immediately report any observed dumping or spilling of improper materials into or on BCBC stormwater facilities, roadways, grounds and open waters.

Penalties

These procedures are to be implemented by all BCBC personnel. Any BCBC officer or employee, who continues to be in violation of the provisions of this policy and procedure, after being duly notified, shall be subject to removal, suspension, demotion, or other disciplinary action.

Definitions

Municipal Separate Stormwater Sewer System (MS4): a conveyance or system of conveyances (including roads and drainage systems, streets, catch basins, curbs, gutters, ditches, manmade channels, or storm drains) that is owned or operated by the BCBC or other public body, and is designed and used for collecting and conveying stormwater.

Stormwater flow: water resulting from precipitation that runs off the land surface, is transmitted to the sub-surface, is captured by a MS4, or is conveyed by snow removal equipment.

Improper materials are any material other than stormwater flow.

Prohibited Conduct

BCBC employees are prohibited from:

Spilling, dumping, or disposing of materials other than stormwater directly to the BCBC MS4, or spilling, dumping, or disposing of materials other than stormwater in such a manner as to cause the discharge of pollutants to the BCBC MS4.

Exceptions to Prohibitions:

1. *Water main flushing and discharges from potable water sources.*
2. *Uncontaminated groundwater from sources such as basement sumps or utility excavations.*
3. *Air conditioning condensate.*
4. *Irrigation water or lawn sprinkling.*
5. *Natural flows from springs.*
6. *Flows from fire fighting.*
7. *Flows from **properly** rinsing equipment used in the application of salt and de-icing materials immediately following use.*

Employee Practices and Procedures

- BCBC employees shall not dump any materials or substances in storm drains or spill any of the following types of materials on the ground, sidewalks or driveways. These materials include automotive fluids, used motor oils, paints and solvents, lawn and garden supplies, cleaning supplies.
- BCBC employees shall properly dispose all spent filters and used oils.
- BCBC employees shall properly store, for re-cycling, all automotive batteries.
- BCBC employees shall not rake or deposit yard waste into storm drains, culverts, open channels or drainage swales.
- BCBC employees shall not flush automotive radiators to storm drains.

- BCBC employees shall comply with all standard operating procedures of the BCBC.
- BCBC employees shall report any observed dumping or spilling, either intentional or accidental, to their immediate supervisor. Reports shall attempt to quantify the size of the spill.
- Employees must immediately report to their supervisors or BCBC Police all fluid spills due to automotive accidents on BCBC roads and bridges.
- BCBC supervisors or Police will report all accidents with minor spill incidents to the appropriate Fire Dept, as well as the Burlington County Bridge Maintenance Department and the appropriate towing service as necessary.

-

Fire Departments

Name	Contact	Phone
Burlington City Fire Dept.		609 386 0200
Palmyra Fire Dept.		609 829 0020

Towing Services

Name	BCBC Location	Phone
Helmrich Towing	Tacony Palmyra Bridge	856 665 2666
Flannigan's Towing	Tacony Palmyra Bridge	856 486 0606
Quality Auto Body	Burlington Bristol Bridge	609 386 6666
Flynn's Towing	Burlington Bristol Bridge	609 894 2729

- BCBC supervisors or Police shall report all accidents with significant spill incidents to:

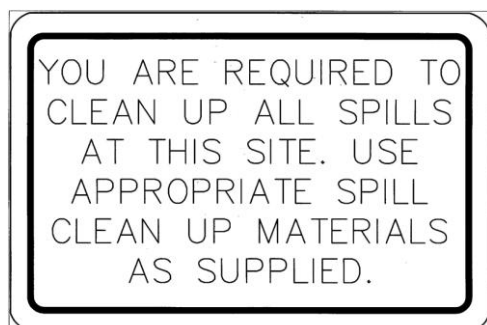
Name	Contact	Phone
Burlington County Health Department		609 265 5548
Burlington County Emergency Management		609 518 7200
Burlington County HAZMAT		609 518 7200
NJDEP Southern Region		856 629 0555
NJDEP Hotline		877 927 6337

- Whenever possible BCBC employees shall immediately clean up, with proper absorbent materials, all accidental spills to minimize any runoff to stormwater facilities. Employees will immediately notify the Police dispatcher when spill quantities or materials exceed their capacity for clean-up or require hazardous material training for clean-up.
- Prior to rinsing road salting equipment, BCBC employees shall remove (to the maximum extent practicable) all residual salt by raking and/or scraping. Removed residual salts must be swept up and properly stored.
- BCBC employees shall not “top-off” fuel tanks or fuel containers.
- Portable equipment will be fueled before leaving for the job site. However on-site re-fueling of portable equipment, such as pumps and mowers, is permitted as required. BCBC employees shall take all necessary precautions for proper re-fueling on the job site. To avoid spills on-site refueling must be done from a nozzle equipped can, or through an adequately sized funnel.
- BCBC employees shall use drip pans or absorbent pads to capture any fluid leaking from automotive or maintenance equipment. All leaking equipment must be reported immediately and repaired before re-use.
- BCBC employees shall ensure that refuse containers and dumpsters are covered at all times and shall prevent the spilling, dumping, leaking, or otherwise discharge of solid waste or liquids from the containers.

BCBC Support

- The BCBC will keep all trucks and equipment properly supplied with spill kits and absorbent materials.
- The BCBC will train all employees in the proper use of spill clean-up materials.
- The BCBC will procure, store and maintain an ample supply of spill cleanup materials.
- The BCBC will provide proper waste disposal containers at readily accessible locations.
- The BCBC will properly maintain all fixed, mobile or portable assets that use or store materials that could pollute the state’s open and ground waters, including all motor vehicles, light and heavy equipment, tanks, pumps, piping and fuel dispensing equipment.
- The BCBC will repair all assets found to be leaking or in disrepair. No such asset shall be operated until permanently repaired. Temporary repairs may only be used to prevent additional leakage or to mitigate potential hazards.
- The BCBC will install reminder signs (see below) in all facility work areas.
- The BCBC will inspect refuse containers and dumpsters monthly.

Sample sign



<p>On-Site Equipment and Vehicle Washing/Wastewater Containment See permit for certification and log forms for Underground Storage Tanks.</p>
<p>N/A</p> <p>Burlington Bristol Bridge police and maintenance vehicles are taken to a commercial car wash. Any other large equipment vehicles are washed at the Tacony Palmyra Maintenance Building Wash Station.</p>
<p>Salt and De-icing Material Storage and Handling</p>
<p><u>Introduction and Purpose</u> Below is a description of Burlington County Bridge Commission's current salt and deicing materials storing practices and the inspection schedule for the storage areas. The goal of this program is to minimize the amount of salt and deicing materials that enter the Commission's municipal separate storm sewer system (MS4) and are eventually discharged into state open waters.</p> <p><u>Scope</u> Burlington County Bridge Commission has two permanent salt storages. Salt storage at the Burlington-Bristol Bridge Maintenance Yard is located inside the Maintenance Garage building and completely conforms to all NJDEP requirements.</p> <p>The Tacony-Palmyra Bridge Maintenance Yard road salt storage is located under the Tacony-Palmyra Bridge deck. The walls are extended vertically to the bridge deck, thus completely enclosing three sides, with an industrial strip curtain door on the entrance side of the salt storage. Note that the Commission also stores sand in the road salt storage facility. The sand and road salt piles are placed adjacent to one another. Topsoil, mulch, and crushed stone piles are located next to the bridge's south abutment and are enclosed with concrete barriers. The piles are distanced 60 feet from the nearest water body. There are no stormwater conveyance structures in the area. An inspection and clean-up (if necessary) will be conducted after every loading and unloading operation of salt and/or other de-icing materials. Any salt or de-icing materials used in a storm event will be placed back into storage 72 hours after the end of the event.</p>
<p>Aggregate Material and Construction Debris Storage</p>
<p>Burlington County Bridge Commission will have little to no aggregate materials or construction debris. Most debris removal will be the responsibility of the Assigned Contractor. If debris generated by the Burlington County Bridge Commission will be transported to the County Landfill.</p>
<p>Street Sweepings, Catch Basin Clean Out, and Other Material Storage</p>
<p>Street sweepings are dumped into a dedicated dumpster located at the Tacony Palmyra Bridge Maintenance Yard.</p>

<p>Catch Basin Clean Out material are dumped into a dedicated dumpster at the Tacony Palmyra Bridge Maintenance Yard.</p> <p>Waste in the dedicated dumpster is periodically pick up by Designated Contractor.</p>	
Yard Trimmings and Wood Waste Management	
Yard trimmings and wood waste is disposed of at the Burlington County Landfill.	
<p>Records: Indicate the location of inspection logs and tracking forms associated with this maintenance yard or ancillary operation, including documentation of conditions requiring attention and remedial actions that have been taken or planned. Documentation should include the date and time of inspection, the name of the person conducting the inspection, and relevant findings.</p>	
<p>Burlington Bristol Bridge Administration Building 348 Conover Street Burlington, NJ 08016</p>	<p>Tacony Palmyra Bridge Maintenance Building 1325 Route 73 South Palmyra. NJ 08065</p>

SPPP Form 11 – Storm Drain Inlets

Storm drain inlets are the point of entry into the storm drain system.

Inspections: Describe the program and frequency of inspections, cleaning, and maintenance of storm drain inlets that are owned or operated by the permittee.

Inspections, cleaning and maintenance are carried out annually by Burlington County Bridge Commission Maintenance Department. Any additional maintenance will be performed as needed.

Design and Retrofitting: Describe how the permittee ensures that the current design standards for storm drain inlets (specified in permit Attachment C) are incorporated in development projects. Also describe how the permittee ensures that retrofitting of storm drain inlets is completed when required.

Introduction and Purpose

This section describes the Burlington County Bridge Commission's storm drain inlet retrofitting program. Its purpose is to reduce the amount of solids and floatables entering the state open waters by retrofitting or replacing catch basin inlet grates and curb pieces that do not conform to the state standard.

Scope

For most projects, the Commission will use a bicycle safe grate (Campbell Pattern No. 2168) and, if applicable, a curb opening with a clear space no bigger than two inches across the smallest dimension. Curb backs may be modified with retrofit kits available from Campbell Foundry. Refer to SPPP Section 3 for schematics of acceptable retrofit designs. Note that the Commission does not have any water quality devices that might warrant an exemption from this program. Additionally, the Commission does not foresee any exemption based on an encroachment threatening a New Jersey Register-listed historic property.

Below is a list of projects scheduled by the Commission for capital improvements that may require inlet retrofitting:

Construction Project Name	Estimated Schedule			Storm Drains	
	Projected Start	Start	Completion	Total	With Hydraulic Exemptions

Labeling: Describe the inspection and label maintenance plan on storm drain inlets that do not have permanent wording cast into the design.

Introduction and Purpose

This section describes Burlington County Bridge Commission's storm drain inlet labeling program, including the labeling schedule, the details of the long-term maintenance plan, and plans on coordinating with watershed groups or other volunteer organizations per NJDEP requirements.

Scope

The Commission has prepared a program of drain labeling that has primarily incorporated Commission and County Maintenance employees. The Commission may utilize volunteer organizations for the labeling program on a project basis if approached by any. All storm drains on the regulated properties (all service areas, maintenance facilities, and storm drain inlets along streets with sidewalks within the Highway Agency's MS4) are to be marked to indicate that discharges into the system enter New Jersey's streams and lakes

Per the agreement between the Commission and Burlington County, labeling of storm drain inlets located on the portion of River Road under the commission's jurisdiction will be performed by the County. The commission's responsibility is thus reduced to the labeling of impacted storm drain inlets located within the maintenance yards, toll plazas, and its bridges. Overall, these facilities account for 118 storm drain inlets, 96 scuppers on Tacony-Palmyra Bridge, and 36 scuppers on Burlington-Bristol Bridge.

Labeling will be completed using Das Manufacturing, Inc.'s Das Duracast Curb Markers™, or an equivalent. The markers are plastic labels displaying a fish sign and reading "NO DUMPING – DRAINS TO WATERWAYS". Labels will be secured to the inlets using adhesive. A polyurethane "dome" is applied to the face of this premium marker. This optically clear, self-healing, non-yellowing Duracast surface protects against mechanical and chemical abrasion. The Duracast surface effectively doubles U.V. resistance as well. It is the most durable marker available from Das Manufacturing and is guaranteed to remain legible and secure for 12 years.



All new drain inlets that will be installed as part of a redevelopment or new development projects will be pre-stamped at the foundry with a permanent sign displaying a fish sign and a message "DUMP NO WASTE – DRAINS TO WATERWAYS".

In terms of long-term maintenance, All the labels will be rechecked during the annual catch basin cleanout to ensure that they are still visible. A sample inspection form is attached. Note that markers that are in disrepair or are missing will be replaced.

The procedure for installing the markings, per the Manufacturer are as follows:

1. Clean Surface

Make sure application surface is flat, dry and free of any loose debris.



2. Apply Adhesive

Coming in 1/8" from the outside edge of the marker, apply a bead of adhesive and then work in to the center.



3. Place Marker

Apply the marker to the application surface pushing down HARD forcing adhesive out around the entire edge. It is important that the entire edge of the marker is sealed to the application surface.



All images Das Manufacturing

Records: Indicate the location of records that include storm drain inlet locations, inspection dates, observations, and maintenance/repairs performed, if applicable.

**Burlington Bristol Bridge
Administration Building
348 Conover Street
Burlington, NJ 08016**

**Tacony Palmyra
Maintenance Building
1325 Route 73 South
Palmyra, NJ 08065**

SPPP Form 12 – Catch Basins

Catch basins are the cistern, vault, chamber or well that is usually built along a street as part of the storm sewer system to capture sediment, debris and pollutants.

Inspections: Describe the program for inspections of catch basins that are owned or operated by the permittee.

Introduction and Purpose

This section describes the Burlington County Bridge Commission's stormwater facility maintenance program. Presently those facilities include catch basins, curb inlets, outfalls, and their connecting infrastructure. The Commission does not own or operate any other stormwater related facilities, such as detention or retention basins, or conveyance ditches. The goal of the program is to keep all the stormwater facilities fully functional and in good working condition.

Scope Scheduled Task in Icompass Maintenance Management System

The Commission has completed mapping all of its catch basins. This will aid the maintenance staff in locating the appropriate catch basins, as well as recognizing any negative trends and planning proper corrective measures. Per the minimum permit requirements, the Commission has set up a clean out program and is preparing a necessary repair program; all catch basins will be cleaned out within one year of permit authorization.

There are 260 catch basins (128 catch basins and 132 scuppers) on the property operated or owned by the Commission, excluding the portions of River Road between minor bridges (Pennsauken Creek Bridge, Route 73 Overpass, Swede Run Bridge, and Twin Pipe Culvert). All catch basins and scuppers will be inspected and cleaned annually or more frequently (if needed). Cleaning and maintenance activities are currently being coordinated with Burlington County. Should the county have insufficient equipment or manpower to accomplish this task, Burlington County Bridge Commission will consider a private contractor. A private contractor may be available through "state contracting". At the time of inspection, if no sediment, trash, or debris is observed in the catch basin, that catch basin will not be cleaned, but the inspection itself will be recorded. Inspection and cleaning information will be recorded by field personnel on forms developed for catch basin maintenance. The information recorded will include the structural condition and functionality of the inlet as well as the approximate amount of materials removed. Maintenance will be scheduled for those catch basins that are found to be in disrepair. The maintenance and inspection date associated with each catch basin will be recorded. The annual cleaning program will begin in April of 2005. All debris removed will be recorded and properly disposed of. Please see the attached *Storm Drain Inlet Cleanout Form*

Cleaning and Maintenance: Describe when a catch basin must be cleaned. The program must include procedures for cleaning, and shall be implemented as frequently as necessary to ensure, at a minimum, that sediment, trash, or other debris is removed as necessary to control it from entering the waters of the State, to eliminate recurring problems and maintain proper function.

A vactor/sweeper truck will be used to remove any debris or sediment from the catch basins.

Records: Indicate the location of records that include catch basin locations, inspection dates, observations, amount of materials collected in wet tons and maintenance/repairs performed, if applicable.

**Burlington Bristol Bridge
Administration Building
348 Conover Street
Burlington, NJ 08016**

**Tacony Palmyra
Maintenance Building
1325 Route 73 South
Palmyra. NJ 08065**

SPPP Form 13 – Employee Training

Employee Training: Stormwater Program Coordinator (SPC) must ensure appropriate staff receive training on topics in the chart below.		
Topic	Frequency	Office/Entity Responsible for Training
1. Maintenance Yard/Ancillary Operations	Annually	Stormwater Program Coordinator
2. Stormwater Facility Maintenance	Annually	Stormwater Program Coordinator
3. SPPP Training & Recordkeeping	Annually	Stormwater Program Coordinator
4. Street Sweeping	Annually	Stormwater Program Coordinator
5. Illicit Connections & Outfall Mapping	Annually	Stormwater Program Coordinator
6. Outfall Stream Scouring	Annually	Stormwater Program Coordinator
7. Waste Disposal Education	Annually	Stormwater Program Coordinator
8. Regulatory Mechanisms	Annually	Stormwater Program Coordinator
9. Construction Activity/Post-Construction Stormwater Management in New Development and Redevelopment	Annually	Stormwater Program Coordinator Resident Engineer
Records: Indicate the location of associated training sign in sheets, dates, and agendas or description for each topic for employee training.		
<div style="display: flex; justify-content: space-around;"> <div style="text-align: left;"> Burlington Bristol Bridge Administration Building 348 Conover Street Burlington, NJ 08016 </div> <div style="text-align: left;"> Tacony Palmyra Maintenance Building 1325 Route 73 South Palmyra, NJ 08065 </div> </div>		
Stormwater Management Reviewer Training: Indicate the names of all individuals who review the stormwater management design for development and redevelopment projects on behalf of the permittee. Indicate the dates on which these individuals attended the required NJDEP training course.		

SPPP Form 14 – Mapping Outfall Pipes and Stormwater Facilities

Visit https://www.nj.gov/dep/dwq/msrp_map_aid.htm for the NJ DEP free mapping application. Outfall pipe maps and stormwater facilities maps may be combined. Updates to these maps shall be submitted annually to include new or newly identified outfall pipes and stormwater facilities.

Mapping Outfall Pipes: Attach an image or provide a link to a map of the outfall pipes owned or operated by the permittee, showing the location of the end of all MS4 outfall pipes (in tidal and non-tidal receiving waters) owned or operated by the permittee which discharge to a surface water body. Include the location and name of all surface water bodies receiving discharges from those outfall pipes.

Introduction and Purpose

This section describes Burlington County Bridge Commission's outfall mapping and the data collection methodology, including the mapping schedule and the details of the mapping plan.

Scope

The Commission has completed the mapping of all the outfalls located on its property; including maintenance yards, toll plazas, and major and minor bridges. Any remaining outfalls located along the portion of River Road and Route 73, excluding the minor bridges, under the Commission's jurisdiction, will be located and mapped by Burlington County, per the agreement between the two Highway Agencies.

All located and identified outfalls are mapped in a GIS environment in the New Jersey State Plane Coordinate System (North American Datum of 1983) using ArcView®, thus allowing simple and easily data sharing between the Commission and the Burlington County. Outfalls were located by Garden State Engineering personnel utilizing a handheld Garmin eTrex Venture® GPS unit.

Burlington County Bridge Commission's outfall mapping will be available at a 1" = 200' scale for review purposes, or at a more detail scale if needed.

All outfall locations were referenced against existing utility mapping provided by the Commission, and high resolution aerial photos (circa 2002) available from the NJDEP. Dividing the Burlington County Bridge Commission's MS4 into two sectors was found to be unnecessary due to the low number of existing outfalls. A total of 32 outfalls have been located and mapped.

Burlington County Highway Department is coordinating outfall inspections along River Rd. along with Burlington County Bridge Commission.

OUTFALL ID	LOCATION	COORDINATES		STRUCTURE	RECEIVING WATERBODY
OF-TP-01	<u>TPB MAINTENANCE BLDG PARKING LOT</u>	N: 40°00'28.5"	W: 75°02'24.8"	<u>HEADWALL WITH WINGWALL - 15" CMP</u>	<i>Stream leading to Delaware River</i>
OF-TP-02	<u>PALMYRA COVE NATURE PARK</u>	N: 40°00'29.4"	W: 75°02'28.8"	<u>HEADWALL WITH WINGWALL - 15" CMP</u>	<i>Stream leading to Delaware River</i>
OF-TP-03	<u>TPB ACCESS ROAD NEXT TO BRIDGE</u>	N: 40°00'31.1"	W: 75°02'24.5"	<u>12" CIP</u>	<i>Stream leading to Delaware River</i>
OF-TP-04	<u>TPB ACCESS ROAD NEXT TO BRIDGE</u>	N: 40°00'30.6"	W: 75°02'24.4"	<u>12" RCP</u>	<i>Stream leading to Delaware River</i>
OF-TP-05	<u>TPB ACCESS ROAD NEXT TO BRIDGE</u>	N: 40°00'27.5"	W: 75°02'21.4"	<u>15" CMP</u>	<i>Stream leading to Delaware River</i>
OF-TP-06	<u>TPB ACCESS ROAD NEAR TOLL BUILDING</u>	N: 40°00'26.4"	W: 75°02'18.2"	<u>15" CAST IRON PIPE</u>	<i>Stream leading to Delaware River</i>
OF-TP-07	<u>TPB ACCESS ROAD NEAR TOLL BUILDING</u>	N: 40°00'26.6"	W: 75°02'18.6"	<u>12" CORRUGATED METAL PIPE</u>	<i>Stream leading to Delaware River</i>
OF-TP-08	<u>TPB ACCESS ROAD NEAR TOLL BUILDING</u>	N: 40°00'25.7"	W: 75°02'17.3"	<u>12" CORRUGATED METAL PIPE</u>	<i>Stream leading to Delaware River</i>
OF-TP-09	<u>TPB ACCESS ROAD NEAR TOLL BUILDING</u>	N: 40°00'25.2"	W: 75°02'16.9"	<u>8" CORRUGATED METAL PIPE</u>	<i>Stream leading to Delaware River</i>
OF-TP-10	<u>TPB ACCESS ROAD NEAR TEMPLE BLVD.</u>	N: 40°00'23.9"	W: 75°02'15.3"	<u>6" CORRUGATED METAL PIPE</u>	<i>Stream leading to Delaware River</i>
OF-TP-11-A	<u>TPB ACCESS ROAD NEAR TEMPLE BLVD.</u>	N: 40°00'23.9"	W: 75°02'15.2"	<u>6" CORRUGATED METAL PIPE</u>	<i>Stream leading to Delaware River</i>
OF-TP-11	<u>TPB ACCESS ROAD NEAR TEMPLE BLVD.</u>	N: 40°00'24.2"	W: 75°02'15.2"	<u>6" CORRUGATED METAL PIPE</u>	<i>Stream leading to Delaware River</i>
OF-TP-12	<u>TPB POLICE BLDG PARKING LOT.</u>	N: 40°00'23.7"	W: 75°02'22.6"	<u>HEADWALL WITH WINGWALLS - 15" CMP</u>	<i>Stream leading to Delaware River</i>
OF-TP-13	<u>TPB POLICE BLDG PARKING LOT.</u>	N: 40°00'24.4"	W: 75°02'24.1"	<u>PIPE - 10" CMP</u>	<i>Stream leading to Delaware River</i>
OF-TP-14	<u>TPB TEMPLE BLVD.</u>	N: 40°00'22.5"	W: 75°02'11.4"	<u>PIPE - 15" TCP</u>	<i>Stream leading to Delaware River</i>
OF-TP-15	<u>TPB TEMPLE BLVD.</u>	N: 40°00'21.4"	W: 75°02'06.6"	<u>HEADWALL WITH WINGWALLS - 30" CMP</u>	<i>Ditch along Market St</i>
OF-TP-16	<u>TPB MARKET ST & SAUDER ST</u>	N: 40°00'18.6"	W: 75°02'10.8"	<u>HEADWALL WITH WINGWALLS, SCOUR PAD & TRASH RACK</u>	<i>Ditch along Souder St</i>
OF-PC-17	<u>PENNSAUKEN CREEK BRIDGE RT. 543</u>	N: 39°50'39.3"	W: 75°01'58.8"	<u>HEADWALL - 12 CMP</u>	<i>Pennsauken Creek</i>
OF-PC-18	<u>PENNSAUKEN CREEK BRIDGE RT. 543</u>	N: 39°59'41.0"	W: 75°01'56.3"	<u>HEADWALL - 15" CMP</u>	<i>Pennsauken Creek</i>
OF-PC-19	<u>PENNSAUKEN CREEK BRIDGE WEST RAMP</u>	N: 39°59'41.5"	W: 75°01'56.8"	<u>HEADWALL WITH WINGWALLS - 15" CMP</u>	<i>Pennsauken Creek</i>
OF-PC-20	<u>PENNSAUKEN CREEK BRIDGE RT. 543</u>	N: 40°00'44.6"	W: 75°00'27.4"	<u>30" CMP WITH TRASH GATE</u>	<i>Pompeston Creek</i>
OF-PC-21	<u>PENNSAUKEN CREEK BRIDGE RT. 543</u>	N: 40°00'43.8"	W: 75°01'58.8"	<u>HEADWALL WITH SCOUR PAD - 12" CMP</u>	<i>Pompeston Creek</i>
OF-SR 022	<u>SWEDES RUN BRIDGE RT. 543</u>	N: 40°01'47.4"	W: 74°58'41.0"	<u>HEADWALL WITH RIPRAP - 24" RCP</u>	<i>Swedes Run Creek</i>
OF-SR 023	<u>SWEDES RUN BRIDGE RT. 543</u>	N: 40°01'47.6"	W: 74°58'40.0"	<u>HEADWALL WITH RIPRAP - 24" RCP</u>	<i>Swedes Run Creek</i>
OF-RD 024	<u>RIVERSIDE DELANCO BRIDGE NORTH END</u>	N: 40°02'42.1"	W: 74°57'29.1"	<u>HEADWALL RCP</u>	<i>Rancocas Creek</i>

OF-TC-025	DELANCO TWIN PIPE CULVERT	N: 40°03'26.6"	W: 74°56'17.6"	HEADWALL WITH RIPRAP - 24" RCP	<i>Boggs Ditch</i>
OF-TC-026	DELANCO TWIN PIPE CULVERT	N: 40°03'26.3"	W: 74°56'17.4"	HEADWALL - 30" RCP	<i>Boggs Ditch</i>
OF-BB-27	BBB OFFICE BUILDING PARKING LOT	N: 40°04'33.1"	W: 74°51'59.8"	HEADWALL WITH TRASH RACK - 18" RCP	<i>Delaware River</i>
OF-BB-028	BBB KEIM BLVD BOX CULVERT	N: 40°04'24.1"	W: 74°51'56.0"	HEADWALL - 18" RCP	<i>Delaware River</i>
OF-BB-029	BBB KEIM BLVD BOX CULVERT	N: 40°04'23.9"	W: 74°51'57.3"	HEADWALL - 42" CMP	<i>Delaware River</i>
OF-BB-030	BBB KEIM BLVD BOX CULVERT	N: 40°04'24.3"	W: 74°51'57.3"	HEADWALL - 12" CMP	<i>Delaware River</i>
OF-BB-031	BB KEIM BLVD & OAKLAND AVE	N: 40°04'22.3"	W: 74°51'56.4"	HEADWALL WITH WINGS	<i>Delaware River</i>

TP=TACONY
 PALMYRA
 BRIDGE
 BB=BURLINGTON
 BRISTOL BRIDGE
 PC=PENNSAUKEN
 CREEK BRIDGE
 SR=SWEDES RUN
 BRIDGE, DELRAN
 RD=RIVERSIDE
 DELANCO BRIDGE
 TC=TWIN
 CULVERT
 DELANCO

MEASURING DEVICE - GARMIN EXTREX VENTURE
 2005

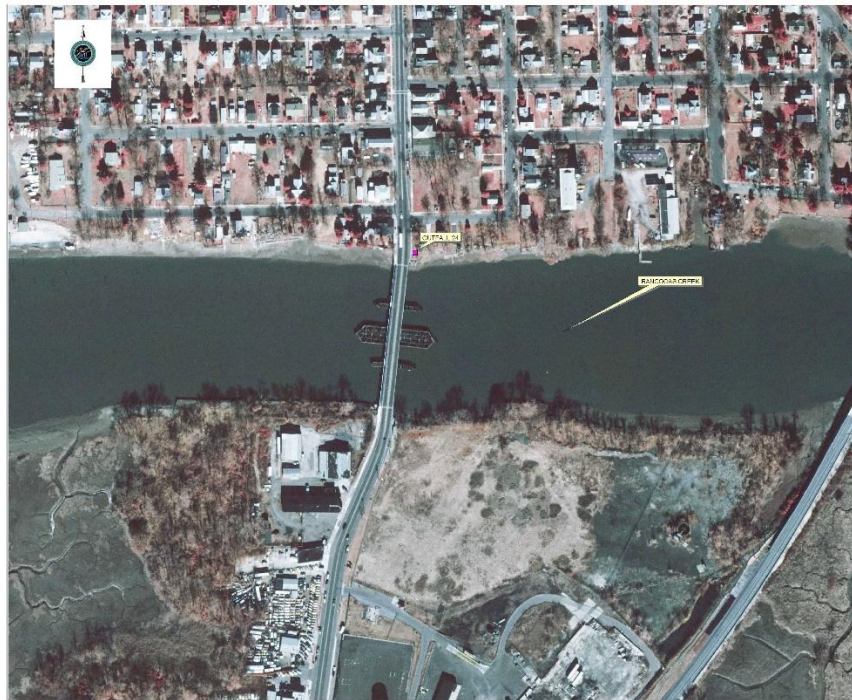




0 100 200 300 Feet

NOTES: 1. THIS MAP IS FOR INFORMATION ONLY. IT IS NOT A LEGAL DOCUMENT.
2. THE LOCATION OF THE OUTLET IS APPROXIMATE.
3. THE LOCATION OF THE OUTLET IS APPROXIMATE.
4. THE LOCATION OF THE OUTLET IS APPROXIMATE.
5. THE LOCATION OF THE OUTLET IS APPROXIMATE.

SHEET 1 OF 1 DATE: 04/24/2009



0 100 200 300 Feet

NOTES: 1. THIS MAP IS FOR INFORMATION ONLY. IT IS NOT A LEGAL DOCUMENT.
2. THE LOCATION OF THE OUTLET IS APPROXIMATE.
3. THE LOCATION OF THE OUTLET IS APPROXIMATE.
4. THE LOCATION OF THE OUTLET IS APPROXIMATE.
5. THE LOCATION OF THE OUTLET IS APPROXIMATE.

BANDOLIER POINT

SHEET 1 OF 1 DATE: 04/24/2009



100' 0' 100' 200' 300' 400' 500' Feet

SUPPLEMENTAL TO THE 2008-2012
BURLINGTON COUNTY WASTE COMMISSION
2008-2012
P.O. BOX 6
PALM BEACH, FL 33480
COUNTY OF BURLINGTON
COMMISSIONER OF
SOLID WASTE

SHEET 1 OF 2 DATE: 04/21/2009



100' 0' 100' 200' 300' 400' 500' Feet

SUPPLEMENTAL TO THE 2008-2012
BURLINGTON COUNTY WASTE COMMISSION
2008-2012
P.O. BOX 6
PALM BEACH, FL 33480
COUNTY OF BURLINGTON
COMMISSIONER OF
SOLID WASTE

SHEET 1 OF 2 DATE: 04/21/2009



Mapping Stormwater Facilities: Attach an image or provide a link to a map of the stormwater facilities owned or operated by the permittee. Include the property boundaries of the Highway Agency maintenance yards, ancillary operations, rest areas, and service areas as well as an annotated map of roadways and thoroughfares owned or operated by the permittee. The map shall include the location and type of each stormwater facility, e.g., outfalls, inlets (constructed after Jan 1, 2020), basins, subsurface infiltration/detention systems, MTDs, green infrastructure, etc.

N/A

SPPP Form 15 – Outfall Pipe Inspections

<p>Inspection Schedule: Describe the frequency and the program in place for inspecting outfall pipes owned or operated by the permittee.</p>
<p>Outfall inspections are done annually by the Burlington County Bridge Commission Maintenance Department.</p>
<p>Stream Scouring: Describe the program in place to detect, investigate and control localized stream scouring from stormwater outfall pipes.</p>
<p><u>Introduction and Purpose</u></p> <p>Below is a description of the Burlington County Bridge Commission's outfall pipe stream scouring detection, remediation, and maintenance program to detect and control active, localized stream, and stream bank scouring.</p> <p><u>Scope</u></p> <p>During the dry weather flow inspections performed on December 16, 2004, Garden State Engineering also inspected the 32 outfall facilities for signs of scouring and structural deterioration. All findings were recorded on a <i>Storm Sewer Outfall Inspection Form</i>, designed to include and prioritize stream scour and structural deterioration. A capital improvements/repair project for the impacted facilities will be developed following a completion of a repair priority list. All stream scour repairs will be designed and constructed in accordance with the <i>Standards for Soil Erosion and Sediment Control in New Jersey</i>, and under supervision of a New Jersey licensed Professional Engineer. A wetlands study and topographic survey of the outfalls will be completed prior to design.</p> <p>A repair priority list will be prepared after existing deficiencies and all other relevant information has been reviewed.</p>
<p>Illicit Discharges: Describe the program in place for conducting visual dry weather inspections of outfall pipes that are owned or operated by the permittee.</p>
<p><u>Introduction and Purpose</u></p> <p>This section describes the Illicit Connection Elimination Program and explains how Burlington County Bridge Commission plans to respond to potential and/or confirmed illicit connections.</p> <p><u>Scope</u></p> <p>Garden State Engineering composed a <i>Storm Sewer Outfall Inspection Form</i> for Burlington County Bridge Commission maintenance staff use. The form is based on the NJDEP <i>Illicit Connection Inspection Report Form</i>, but it also contains information that will help the Commission in prioritization of any necessary repairs. All the information collected in the field will be transferred to a NJDEP <i>Illicit Connection Inspection Report Form</i>, and made available for review and submission with the <i>Annual Report and Certification</i>.</p>

No indications of illicit connections were found in the initial inspection. Two outfalls were found to have a dry weather flow. No indications of illicit connections were observed. Should any dry weather flows be found during future inspections that are suspected of being sanitary sewage and/or otherwise significantly contaminated and present an immediate threat to human health or the environment, the incident(s) will be reported to the NJDEP Action Hotline (1-877-927-6337).

Garden State Engineering performed the initial dry weather flow inspections on December 16, 2004. Trained Commission personnel will perform future dry weather flow inspections.

When an illicit connection is found within the Commission's property, immediate action will be taken to remedy the problem. Investigation results as well as illicit connection elimination plan will be outlined in the corresponding *Illicit Connection Inspection Report Form*.

If, after the appropriate amount of investigation, the source of illicit connection is not located, a *Closeout Investigation Form* (attached) will be submitted along with *Illicit Connection Inspection Report Forms* in the *Annual Report and Certification*. If an illicit connection is found to originate from another entity, Burlington County Bridge Commission will report the illicit connection to the Department and to the suspected offender immediately.

January 1, 2024-December 31, 2024

Note: Attach a copy of each Illicit Connection Inspection Report Form for outfalls found to have a dry weather flow.

Total number of inspections performed this year? 32

Number of outfalls found to have a dry weather flow? 0

Number of outfalls found to have an illicit connection? N/A

How many illicit connections were eliminated? N/A

Of the illicit connections found, how many remain N/A

Records: Indicate the location of all records related to outfall pipe inspection, including the location, inspection date, inspector name, findings, preventative and corrective maintenance performed. If scouring is observed, records of stream scouring must include the contributing source(s) of stormwater, recommended corrective action, and a prioritized list and schedule to remediate scouring cases. If illicit discharge is observed, record results of illicit discharge investigations and actions taken using NJDEP's form at https://www.nj.gov/dep/dwq/public_complex/pdf/PC_Illicit%20Connection%20Inspection%20Report%20Formpdf.pdf. Illicit Connection Inspection Report Forms shall be submitted to the Department as an attachment to the Annual Report and Certification.

**Burlington Bristol Bridge
Administration Building
348 Conover Street
Burlington, NJ 08016**

**Tacony Palmyra Bridge
Maintenance Building
1325 Route 73 South
Palmyra, NJ 08065**

SPPP Form 16 – Stormwater Facilities Inspection and Maintenance

Inspections: Describe the program in place to inspect, clean, and maintain the stormwater facilities that are owned or operated by the permittee.

Introduction and Purpose

This section describes the Burlington County Bridge Commission's stormwater facility maintenance program. Presently those facilities include catch basins, curb inlets, outfalls, and their connecting infrastructure. The Commission does not own or operate any other stormwater related facilities, such as detention or retention basins, or conveyance ditches. The goal of the program is to keep all the stormwater facilities fully functional and in good working condition.

Scope

The Commission has completed mapping all its catch basins. This will aid the maintenance staff in locating the appropriate catch basins, as well as recognizing any negative trends and planning proper corrective measures. Per the minimum permit requirements, the Commission has set up a clean out program and is preparing a necessary repair program; all catch basins will be cleaned out within one year of permit authorization.

There are 260 catch basins (128 catch basins and 132 scuppers) on the property operated or owned by the Commission, excluding the portions of River Road between minor bridges (Pennsauken Creek Bridge, Route 73 Overpass, Pompeston Creek Bridge, Swede Run Bridge, and Twin Pipe Culvert). All catch basins and scuppers will be inspected and cleaned annually or more frequently (if needed). Cleaning and maintenance activities are currently being coordinated with Burlington County. Should the county have insufficient equipment or manpower to accomplish this task, Burlington County Bridge Commission will consider a private contractor. A private contractor may be available through "state contracting". At the time of inspection, if no sediment, trash, or debris is observed in the catch basin, that catch basin will not be cleaned, but the inspection itself will be recorded. Inspection and cleaning information will be recorded by field personnel on forms developed for catch basin maintenance. The information recorded will include the structural condition and functionality of the inlet as well as the approximate amount of materials removed. Maintenance will be scheduled for those catch basins that are found to be in disrepair. The maintenance and inspection date associated with each catch basin will be recorded. The annual cleaning program will begin in April of 2005. All debris removed will be recorded and properly disposed of. Please see the attached *Storm Drain Inlet Cleanout Form*.

Sediment, trash, or debris will be placed in a dedicated dumpster and covered. All material in a covered dumpster will be picked up by commercial service of record.

Any salt or de-icing materials used in a storm event will be placed back into storage 72 hours after the end of the event.

TPB Storm Drain Inlet Inspection / Cleanout Form

ID#	Insp.Date	Insp. By	Needs Attention	Reason	Grate Type	Curb Opening	Label Present	Cleaned By	Cleaned Date	Total Material Collected
CB-TP-I-01			Yes No		Bicycle Stream Flow Other	Yes Restricted Other	Yes No			Tons / Ft3 / Yd3
CB-TP-I-02			Yes No		Bicycle Stream Flow Other	Yes Restricted Other	Yes No			Tons / Ft3 / Yd3
CB-TP-I-03			Yes No		Bicycle Stream Flow Other	Yes Restricted Other	Yes No			Tons / Ft3 / Yd3
CB-TP-I-04			Yes No		Bicycle Stream Flow Other	Yes Restricted Other	Yes No			Tons / Ft3 / Yd3
CB-TP-I-05			Yes No		Bicycle Stream Flow Other	Yes Restricted Other	Yes No			Tons / Ft3 / Yd3
CB-TP-I-06			Yes No		Bicycle Stream Flow Other	Yes Restricted Other	Yes No			Tons / Ft3 / Yd3
CB-TP-I-07			Yes No		Bicycle Stream Flow Other	Yes Restricted Other	Yes No			Tons / Ft3 / Yd3
CB-TP-I-08			Yes No		Bicycle Stream Flow Other	Yes Restricted Other	Yes No			Tons / Ft3 / Yd3
CB-TP-I-09			Yes No		Bicycle Stream Flow Other	Yes Restricted Other	Yes No			Tons / Ft3 / Yd3
CB-TP-I-10			Yes No		Bicycle Stream Flow Other	Yes Restricted Other	Yes No			Tons / Ft3 / Yd3
CB-TP-I-11			Yes No		Bicycle Stream Flow Other	Yes Restricted Other	Yes No			Tons / Ft3 / Yd3
CB-TP-I-12			Yes No		Bicycle Stream Flow Other	Yes Restricted Other	Yes No			Tons / Ft3 / Yd3
CB-TP-I-13			Yes No		Bicycle Stream Flow Other	Yes Restricted Other	Yes No			Tons / Ft3 / Yd3

BBB Storm Drain Inlet Inspection / Cleanout Form

ID#	Insp.Date	Insp. By	Needs Attention	Reason	Grate Type	Curb Opening	Label Present	Cleaned By	Cleaned Date	Total Material Collected
CB-BB-I-01			Yes No		Bicycle Stream Flow Other	Yes Restricted Other	Yes No			Tons / Ft3 / Yd3
CB-BB-I-02			Yes No		Bicycle Stream Flow Other	Yes Restricted Other	Yes No			Tons / Ft3 / Yd3
CB-BB-I-03			Yes No		Bicycle Stream Flow Other	Yes Restricted Other	Yes No			Tons / Ft3 / Yd3
CB-BB-I-04			Yes No		Bicycle Stream Flow Other	Yes Restricted Other	Yes No			Tons / Ft3 / Yd3
CB-BB-I-05			Yes No		Bicycle Stream Flow Other	Yes Restricted Other	Yes No			Tons / Ft3 / Yd3
CB-BB-I-06			Yes No		Bicycle Stream Flow Other	Yes Restricted Other	Yes No			Tons / Ft3 / Yd3
CB-BB-I-07			Yes No		Bicycle Stream Flow Other	Yes Restricted Other	Yes No			Tons / Ft3 / Yd3
CB-BB-I-08			Yes No		Bicycle Stream Flow Other	Yes Restricted Other	Yes No			Tons / Ft3 / Yd3
CB-BB-I-09			Yes No		Bicycle Stream Flow Other	Yes Restricted Other	Yes No			Tons / Ft3 / Yd3
CB-BB-I-10			Yes No		Bicycle Stream Flow Other	Yes Restricted Other	Yes No			Tons / Ft3 / Yd3
CB-BB-I-11			Yes No		Bicycle Stream Flow Other	Yes Restricted Other	Yes No			Tons / Ft3 / Yd3
CB-BB-I-12			Yes No		Bicycle Stream Flow Other	Yes Restricted Other	Yes No			Tons / Ft3 / Yd3
CB-BB-I-13			Yes No		Bicycle Stream Flow Other	Yes Restricted Other	Yes No			Tons / Ft3 / Yd3
CB-BB-I-14			Yes No		Bicycle Stream Flow Other	Yes Restricted Other	Yes No			Tons / Ft3 / Yd3

<p>Records: Indicate the location of records related to stormwater facilities that are owned or operated by the permittee. Records must include the type of stormwater facility, location, inspection date, inspector name, findings, preventative and corrective maintenance performed.</p> <p>Also indicate the location of maintenance plans related to maintenance of stormwater facilities that are owned or operated by the permittee. NJDEP provides materials to assist with this requirement at https://www.nj.gov/dep/stormwater/maintenance_guidance.htm.</p>	
<p>Burlington Bristol Bridge Administration Building 348 Conover Street Burlington, NJ 08016</p>	<p>Tacony Palmyra Bridge Maintenance Building 1325 Route 73 South Palmyra, NJ 08065</p>

SPPP Form 17 – Total Maximum Daily Load (TMDL) Information

Identification: List the names of the adopted TMDLs, parameters addressed, and the affected water bodies associated with any segment of surface water wholly or partially within or bordering all maintenance yards, rest areas, service area properties, and new major development projects as defined by the permittee’s stormwater program.

Refer to the list of TMDL reports provided at <http://www.nj.gov/dep/wms/bears/tmdls.html>. Utilize the TMDL look-up tool at <https://www.nj.gov/dep/dwq/msrp-tmdl-rh.htm> to identify impaired water bodies at locations described above.

Please refer to <https://www.nj.gov/dep/dwq/msrp-tmdl-rh.htm> for information regarding TMDL for each municipality that Burlington County Bridge Commission property is located.

Strategies: Describe how the permittee uses TMDL information to prioritize stormwater facilities maintenance projects and to address specific sources of stormwater pollutants. For guidance on TMDLs, visit <https://www.nj.gov/dep/dwq/pdf/10-21-16-tmdl-tool-box.pdf>.

TDML information for each specific municipality that Burlington County Bridge Commission property is located will be listed on the website.

SPPP Form 18 – Additional Measures and Optional Measures

Additional Measures: Describe any Best Management Practice(s) and the related measurable goal or numeric effluent limitations that are expressly required by the Department to be included in the permittee's stormwater program by a TMDL.
N/A
Optional Measures: Describe any Best Management Practice(s) the permittee has developed that extend beyond the requirements of the permit that prevents or reduces water pollution.
N/A

SPPP Form 19 – Shared or Contracted Services

Arrangements: List the permit conditions that are satisfied through a shared or contracted service where an entity other than the permittee is implementing BMP(s) or control measure(s) on behalf of the permittee. Include the name of the responsible entity and describe the arrangements in place.	
Burlington County Bridge Commission grants permission as a shared service to county and local government to use the wash station at the Tacony Palmyra Maintenance Building. At present, Cinnaminson and Maple Shade Board of Education uses this service for bus washing.	
Records: The permittee is responsible for maintaining the appropriate documentation related to permit conditions, including those satisfied through shared services, in the SPPP and on the Annual Report and Certification. Indicate the physical location of the written agreements and records.	
Burlington Bristol Bridge Administration Building 348 Conover Street Burlington, NJ 08016	Tacony Palmyra Bridge Maintenance Building 1325 Route 73 South Palmyra, NJ 08065

Burlington County Bridge Commission will enforce local municipal law on its property.

- 1. Pet Waste:** The Commission does not own or operate any rest areas, service areas, or any other areas along its roadways which serve the needs of the general public.
- 2. Litter:** The Commission does not own or operate any rest areas, service areas, or any other areas along its roadways which serve the needs of the general public.
- 3. Improper Waste Disposal:** The Commission does not own or operate any rest areas, service areas, or any other areas along its roadways which serve the needs of the general public.

- 4. Wildlife Feeding:** The Commission does not own or operate any rest areas, service areas, or any other areas along its roadways which serve the needs of the general public.
- 5. Palmyra Cove Nature Park:** The Commission does operate the Palmyra Cove Nature Park located in Palmyra Borough. Therefore, the Commission will enforce Palmyra Borough Ordinance 2006-06 prohibiting the feeding of un-confined wildlife and Ordinance 2006-07 regulating the disposal of pet waste.
- 6. Illicit Connections:** The Commission will report any illicit connections to its stormwater system to the appropriate municipality for enforcement per applicable municipal regulations.

The Burlington County Bridge Commission Police Department officers will enforce these ordinances. If someone is found to be in violation of an ordinance, they will be issued a written warning for first time offenses. Penalties may be issued for subsequent offenses when turned over to local authorities

Borough of Palmyra Ordinances

BOROUGH OF PALMYRA

Ordinance No. 2006-05

AN ORDINANCE PROHIBITING THE ILLICIT CONNECTION TO THE BOROUGH OF PALMYRA STORMWATER SEWER SYSTEM

NOW THEREFORE BE IT ORDAINED by the governing body of the Borough of Palmyra, in the County of Burlington, and the State of New Jersey as follows:

SECTION I. Purpose

An ordinance to prohibit illicit connections to the municipal separate storm sewer system(s) operated by the Borough of Palmyra so as to protect public health, safety and welfare, and to prescribe penalties for the failure to comply.

SECTION II. Definitions

For the purpose of this ordinance, the following terms, phrases, words and their derivations shall have the meanings stated herein unless their use in the text of this Chapter clearly demonstrates a different meaning. When not inconsistent with the context, words use in the present tense include the future, words used in the plural number include the singular number, and words used in the singular number include the plural number. The word "shall" is always mandatory and not merely directory. The definitions below are the same as or based on corresponding definitions in the New Jersey Pollutant Discharge Elimination System (NJPDES) rules at N.J.A.C. 7: 14A-1.2.

- a. Domestic Sewage - Waste and wastewater from humans or household operations.
- b. Illicit Connection - Any physical or non-physical connection that discharges domestic sewage, non-contact cooling water, process wastewater, or other

Industrial waste (other than stormwater) to the municipal separate storm sewer system operated by the Borough of Palmyra, unless that discharge is authorized under a NJPDES permit other than the Tier A Municipal Stormwater General Permit (NJPDES Permit Number NJ0141852). Non-physical connections may include, but are not limited to, leaks, flows, or overflows into the municipal separate storm sewer system.

c. Industrial Waste - Non-domestic waste, including, but not limited to, those pollutants regulated under Section 307(a), (b), or (c) of the Federal Clean Water Act (33 U.S.C. Section 1317(a), (b), or (c)).

d. Municipal Separate Storm Sewer System (MS4) - A conveyance or system of conveyances (including roads with drainage systems, municipal streets, catch basins, curbs, gutters, ditches, manmade channels, or storm drains) that is owned or operated by the Borough of Palmyra or other public body, and is designed and used for collecting and conveying stormwater.

e. NJPDES Permit - A permit issued by the New Jersey Department of Environmental Protection to implement the New Jersey Pollutant Discharge Elimination System (NJPDES) rules at N.J.A.C. 7: 14A.

f. Non-Contact Cooling Water - Water used to reduce temperature for the purpose of cooling. Such waters do not come into direct contact with any raw material, intermediate product (other than heat) or finished product. Non-contact cooling water may however contain algacides, or biocides to control fouling of equipment such as heat exchangers, and/or corrosion inhibitors.

g. Person - Any individual, corporation, company, partnership, firm, association, or political subdivision of this State subject to municipal jurisdiction.

h. Process Wastewater - Any water which, during manufacturing or processing, comes into direct contact with or results from the production or use of any raw material, intermediate product, finished product, byproduct, or waste product. Process wastewater includes, but is not limited to, leachate and cooling water other than non-contact cooling water.

i. Stormwater - Water resulting from precipitation (including rain and snow) that runs off the land's surface, is transmitted to the subsurface, is captured by separate storm sewers or other sewerage or drainage facilities, or is conveyed by snow removal equipment.

SECTION III. Prohibited Conduct

No person shall discharge or cause to be discharged through an illicit connection to the municipal separate storm sewer system operated by the Borough of Palmyra any domestic sewage, non-contact cooling water, process wastewater, or other industrial waste (other than stormwater).

SECTION IV. Enforcement

The ordinance shall be enforced by Palmyra Police Department, the Palmyra Board of Health, the Burlington County Board of Health or any employee of the Borough of Palmyra designated by the Administrator.

SECTION V. Violations and Penalties

Any person(s) who is found to be in violation of the provisions of this ordinance shall be subject to a fine not to exceed \$1,000.00.

SECTION VI. Severability and Repealer

Each section, subsection, sentence, clause and phrase of this ordinance is

declared to be independent section, subsection, sentence, clause and phrase, and the finding or holding of any such portion of this ordinance to be unconstitutional, void, or ineffective for any cause, or reason, shall not affect any other portion of this ordinance.

Any and all ordinances inconsistent with the terms of this ordinance are hereby repealed to the extent of any such inconsistencies.

SECTION VII. Effective Date

This Ordinance shall be in full force and effect from and after its adoption and any publication as may be required by law.

I, Pamela Scott, Acting Clerk in the Borough of Palmyra, county of Burlington, State of New Jersey, do hereby certify the foregoing to be a true and correct copy of an ordinance introduced by the Borough Council at a regular meeting of said council held on March 6, 2006. And finally adopted on March 22, 2006 after a public hearing.

BOROUGH OF PALMYRA

Ordinance No. 2006 - 06

AN ORDINANCE PROHIBITING THE FEEDING OF UNCONFINED WILDLIFE AND SUPPLEMENTING CHAPTER 74 OF THE BOROUGH OF PALMYRA CODE

NOW THEREFORE BE IT ORDAINED by the governing body of the Borough of Palmyra, in the County of Burlington, and the State of New Jersey as follows:

Chapter 74 of the Borough of Palmyra Code shall be supplemented by adding a new Article VIII to be entitled "WILDLIFE FEEDING" as follows:

SECTION I. Purpose

An ordinance to prohibit the feeding of unconfined wildlife in any public park or on any other property owned or operated by the Borough of Palmyra, so as to protect public health, safety and welfare, and to prescribe penalties for failure to comply.

SECTION II. Definitions

For the purpose of this ordinance, the following terms, phrases, words and their derivations shall have the meanings stated herein unless their use in the text of this chapter clearly demonstrates a different meaning. When not inconsistent with the context, words used in the present tense include the future, words used in the plural number include the singular number, and words used in the singular number include the plural number. The word "shall" is always mandatory and not merely directory.

a. Feed - To give, place, expose, deposit, distribute or scatter any edible material with the intention of feeding, attracting or enticing wildlife. Feeding does not include baiting in the legal taking of fish and/or game.

b. Person - Any individual, corporation, company, partnership, firm,

association, or political subdivision of this State subject to municipal jurisdiction.

- c. Wildlife - All animals that are neither human nor domesticated.

SECTION III. Prohibited Conduct

a. No person shall feed, in any public park or on any other property owned or operated by the Borough of Palmyra, any wildlife, excluding confined wildlife (for example, wildlife confined in zoos, parks or rehabilitation centers, or unconfined wildlife at environmental education centers).

SECTION IV. Enforcement

The ordinance shall be enforced by the Palmyra Police Department, the Palmyra Board of Health, the Burlington County Board of Health or any employee of the Borough designated by the Administrator.

SECTION V. Violations and Penalty

Any person(s) who is found to be in violation of the provisions of this ordinance shall be subject to a fine not to exceed \$500.00.

SECTION VI. Severability and Repealer

Each section, subsection, sentence, clause and phrase of this ordinance is declared to be an independent section, subsection, sentence, clause and phrase, and the finding or holding of any such portion of this ordinance to be unconstitutional, void, or ineffective for any cause, or reason, shall not affect any other portion of this ordinance.

All ordinances or parts of ordinances inconsistent with this ordinance are repealed to the extent of such inconsistency.

SECTION VII. Effective Date

This ordinance shall be in full force and effect from and after its adoption and any publication as may be required by law.

I, Pamela Scott, Acting Clerk in the Borough of Palmyra, county of Burlington, State of New Jersey, do hereby certify the foregoing to be a true and correct copy of an ordinance introduced by the Borough Council at a regular meeting of said Council held on March 6, 2006. And finally adopted on March 22, 2006 after a public hearing.

BOROUGH OF PALMYRA

Ordinance No. 2006-09

AN ORDINANCE REGULATING THE DISPOSAL OF PET WASTE AND SUPPLEMENTING CHAPTER 74 OF THE BOROUGH OF PALMYRA CODE

NOW THEREFORE BE IT ORDAINED by the governing body of the Borough of Palmyra, in the County of Burlington, and the State of New Jersey as follows:

Chapter 74 of the Borough of Palmyra Code shall be supplemented by adding a new Article VII to be entitled "PET WASTE" as follows:

SECTION I. Purpose

An ordinance to establish requirements for the proper disposal of pet solid waste in the Borough of Palmyra, so as to protect public health, safety and welfare, and to prescribe penalties for failure to comply.

SECTION II. Definitions

For the purpose of this ordinance, the following terms, phrases, words and their derivations shall have the meanings stated herein unless their use in the text of this chapter clearly demonstrates a different meaning. When not inconsistent with the context, words used in the present tense include the future, words used in the plural number include the singular number, and words used in the singular number include the plural number. The word "shall" is always mandatory and not merely directory.

- a. Immediate - Shall mean that the pet solid waste is removed at once, without delay.
- b. Owner/Keeper - Any person who shall possess, maintain, house or harbor any pet or otherwise have custody of any pet, whether or not the owner of such

pet.

c. Person - Any individual, corporation, company, partnership, firm, association, or political subdivision of this State subject to municipal jurisdiction.

d. Pet - A domesticated animal (other than a disability assistance animal) kept for amusement or companionship.

e. Pet Solid Waste - Waste matter expelled from the bowels of the pet; excrement.

f. Proper Disposal - Placement in a designated waste receptacle, or other suitable container, and discarded in a refuse container which is regularly emptied by the municipality or some other refuse collector; or disposal into a system designed to convey domestic sewage for proper treatment and disposal.

SECTION III. Requirements for Disposal

All pet owners and keepers are required to immediately and properly dispose of their pet's solid waste deposited on any property, public or private, not owned or possessed by that person.

SECTION IV. Exemptions

Any owner or keeper who requires the use of a disability assistance animal shall be exempt from the provisions of this section while such animal is being used for the purpose.

SECTION V. Enforcement

The provisions of this ordinance shall be enforced by the Palmyra Police Department, the Palmyra Board of Health, or the Burlington County Board of Health.

SECTION VI. Violations and Penalty

Any person(s) who is found to be in violation of the provisions of this ordinance shall be subject to a fine not to exceed \$500.00.

SECTION VI. Severability and Repealer

Each section, subsection, sentence, clause and phrase of this ordinance is declared to be an independent section, subsection, sentence, clause and phrase, and the finding or holding of any such portion of this ordinance to be unconstitutional, void, or ineffective for any cause, or reason, shall not affect any other portion of this ordinance.

All ordinances or parts of ordinances inconsistent with this ordinance are repealed to the extent of such inconsistency. Chapter 74, Article III, Section 23B shall be repealed in its entirety.

SECTION VII. Effective Date

This ordinance shall be in full force and effect from and after its adoption and any publication as may be required by law.

I, Pamela Scott, Acting Clerk in the Borough of Palmyra, county of Burlington, State of New Jersey, do hereby certify the foregoing to be a true and correct copy of an ordinance introduced by the Borough Council at a regular meeting of said Council held on March 6, 2006. And finally adopted on March 22, 2006 after a public hearing.

BOROUGH OF PALMYRA

Ordinance No. 2006-08

AN ORDINANCE REVISING CHAPTER 164 OF THE BOROUGH OF PALMYRA CODE ENTITLED LITTERING

NOW THEREFORE BE IT ORDAINED by the governing body of the Borough of Palmyra, In the County of Burlington, and the State of New Jersey as follows:

Chapter 164 of the Borough of Palmyra Code shall be deleted in its entirety and replaced with the following:

SECTION I. Purpose

An ordinance to establish requirements to control littering in the Borough of Palmyra so as to protect public health, safety and welfare, and to prescribe penalties for the failure to comply.

SECTION II. Definitions

For the purpose of this ordinance, the following terms, phrases, words and their derivations shall have the meanings stated herein unless their use in the text of this chapter clearly demonstrates a different meaning. When not inconsistent with the context, words used in the present tense include the future, words used in the plural number include the singular number, and words used in the singular number include the plural number. The word "shall" is always mandatory and not merely directory.

a. Litter - Any used or unconsumed substance or waste material which has been discarded, whether made of aluminum, glass, plastic, rubber, paper, or other natural or synthetic material, or any combination thereof, including, but not limited to, any bottle, jar or can, or any top, cap or detachable tab of any bottle, jar or

can, any unlighted cigarette, cigar, match or any flaming or glowing material or any garbage, trash, refuse, debris, rubbish, grass clippings or other lawn or garden waste, newspapers, magazines, glass, metal, plastic or paper containers or other packaging or construction material, but does not include the waste of the primary processes of mining or other extraction processes, logging, sawmilling, farming or manufacturing.

b. Litter Receptacle - A container suitable for the depositing of litter.

c. Person - Any individual, corporation, company, partnership, firm, association, or political subdivision of this State subject to municipal jurisdiction.

SECTION III. Prohibited Acts and Regulated Activities

1. It shall be unlawful for any person to throw, drop, discard or otherwise place any litter of any nature upon public or private property other than in a litter receptacle, or having done so, to allow such litter to remain.

2. Whenever any litter is thrown or discarded or allowed to fall from a vehicle or boat in violation of this ordinance, the operator or owner, or both, of the vehicle or boat shall also be deemed to have violated this ordinance.

SECTION IV. Enforcement

This ordinance shall be enforced by the Palmyra Police Department.

SECTION V. Penalties

Any person(s) who is found to be in violation of the provisions of this ordinance shall be subject to a fine not to exceed \$500.00.

SECTION VI. Severability and Repealer

Each section, subsection, sentence, clause and phrase of this ordinance is declared to be an independent section, subsection, sentence, clause and phrase, and

the finding or holding of any such portion of this ordinance to be unconstitutional, void, or ineffective for any cause, or reason, shall not affect any other portion of this ordinance.

All ordinances or parts of ordinances inconsistent with this ordinance are repealed to the extent of such inconsistency.

SECTION VII. Effective Date

This ordinance shall be in full force and effect from and after its adoption and any publication as may be required by law.

3

I, Pamela Scott, Acting Clerk in the Borough of Palmyra, county of Burlington, State of New Jersey, do hereby certify the foregoing to be a true and correct copy of an ordinance introduced by the Borough Council at a regular meeting of said Council held on March 6, 2006. And finally adopted on March 22, 2006 after a public hearing.

BOROUGH OF PALMYRA

Ordinance No. 2006-09

AN ORDINANCE PROHIBITING THE SPILLING, DUMPING OR DISPOSAL OF MATERIALS OTHER THAN STORMWATER TO THE BOROUGH OF PALMYRA'S STORM SEWER SYSTEM

NOW THEREFORE BE IT ORDAINED by the governing body of the Borough of Palmyra, in the County of Burlington, and the State of New Jersey as follows:

SECTION I. Purpose

An ordinance to prohibit the spilling, dumping, or disposal of materials other than stormwater to the municipal separate storm sewer system (MS4) operated by the Borough of Palmyra, so as to protect public health, safety and welfare, and to prescribe penalties for the failure to comply.

SECTION II. Definitions

For the purpose of this ordinance, the following terms, phrases, words and their derivations shall have the meanings stated herein unless their use in the text of this Chapter clearly demonstrates a different meaning. When not inconsistent with the context, words use in the present tense include the future, words used in the plural number include the singular number, and words used in the singular number include the plural number. The word "shall" is always mandatory and not merely directory.

a. Municipal Separate Storm Sewer System (MS4) - A conveyance or system of conveyances (including roads with drainage systems, municipal streets, catch basins, curbs, gutters, ditches, manmade channels, or storm drains) that is owned or operated by the Borough of Palmyra or other public body, and is designed

and used for collecting and conveying stormwater.

b. Person - Any individual, corporation, company, partnership, firm, association, or political subdivision of this State subject to municipal jurisdiction.

c. Stormwater - Water resulting from precipitation (including rain and snow) that runs off the land's surface, is transmitted to the subsurface, is captured by separate storm sewers or other sewerage or drainage facilities, or is conveyed by snow removal equipment.

SECTION III. Prohibited Conduct

The spilling, dumping, or disposal of materials other than stormwater to the municipal separate storm sewer system operated by the Borough of Palmyra is prohibited. The spilling, dumping, or disposal of materials other than stormwater in such a manner as to cause the discharge of pollutants to the municipal separate storm sewer system is also prohibited.

SECTION IV. Exceptions to Prohibition

- a. Water line flushing and discharges from potable water sources.
- b. Uncontaminated ground water (e.g., infiltration, crawl space or basement sump pumps, foundation or footing drains, rising ground waters).
- c. Air conditioning condensate (excluding contact and non-contact cooling water).
- d. Irrigation water (including landscape and lawn watering runoff).
- e. Flows from springs, riparian habitats and wetlands, water reservoir discharges and diverted stream flows.
- f. Residential car washing water and residential swimming pool

discharges.

- g. Sidewalk, driveway and street wash water.
- h. Flows from fire fighting activities.
- i. Flows from rinsing of the following equipment with clean water:
 - 1) Beach maintenance equipment immediately following their use for their intended purposes; and
 - 2) Equipment used in the application of salt and de-icing materials immediately following salt and de-icing material applications. Prior to rinsing with clean water, all residual salt and de-icing materials must be removed from equipment and vehicles to the maximum extent practicable using dry cleaning methods (e.g., shoveling and sweeping). Recovered materials are to be returned to storage for reuse or properly discarded.

Rinsing of equipment, as noted in the above situation is limited to exterior, undercarriage, and exposed parts and does not apply to engines or other enclosed machinery.

SECTION IV. Enforcement

The ordinance shall be enforced by Palmyra Police Department, the Palmyra Board of Health, the Burlington County Board of Health and any employee of the Borough of Palmyra designated by the Administrator.

SECTION V. Violations and Penalties

Any person(s) who continues to be in violation of the provisions of this ordinance,

after being duly notified, shall be subject to a fine not to exceed \$1,000.00.

SECTION VI. Severability and Repealer

Each section, subsection, sentence, clause and phrase of this ordinance is declared to be independent section, subsection, sentence, clause and phrase, and the finding or holding of any such portion of this ordinance to be unconstitutional, void, or ineffective for any cause, or reason, shall not affect any other portion of this ordinance.

Any and all ordinances inconsistent with the terms of this ordinance are hereby repealed to the extent of any such inconsistencies.

SECTION VII. Effective Date

This Ordinance shall be in full force and effect from and after its adoption and any publication as may be required by law.

+

I, Pamela Scott, Acting Clerk in the Borough of Palmyra, county of Burlington, State of New Jersey, do hereby certify the foregoing to be a true and correct copy of an ordinance introduced by the Borough Council at a regular meeting of said Council held on March 6, 2006. And finally adopted on March 22, 2006 after a public hearing.

**BOROUGH OF PALMYRA
ORDINANCE 2006-10**

**AN ORDINANCE OF THE BOROUGH OF PALMYRA ESTABLISHING A
YARD WASTE COLLECTION AND DISPOSAL PROGRAM**

NOW, THEREFORE BE IT ORDAINED by the governing body of the Borough of Palmyra, in the County of Burlington, and the State of New Jersey as follows:

SECTION I. Purpose

An ordinance to establish a yard waste collection and disposal program in the Borough of Palmyra so as to protect public health, safety and welfare, and to prescribe penalties for the failure to comply.

SECTION II Definitions

For the purpose of this ordinance, the following terms, phrases, words and their derivations shall have the meanings stated herein unless their use in the text of this Chapter clearly demonstrates a different meaning. When not inconsistent with the context, words used in the present tense include the future, words used in the plural number include the singular number, and words used in the number include the plural number. The word "shall" is always mandatory and not merely directory.

- a. Containerized – Means the placement of yard waste in a trash can, bucket, bag or other vessel, such as to prevent the yard waste from spilling or blowing out into the street and coming into contact with stormwater.
- b. Person – any individual, corporation, company, partnership, firm, association, or political subdivision of this State subject to municipal jurisdiction.
- c. Street – Means any street, avenue, boulevard, road, parkway, viaduct, drive, or other way, which is an existing State, county, or municipal roadway, and includes the land between the street lined, whether improved or unimproved, and may comprise pavement, shoulders, gutters, curbs, sidewalks, parking area, and other areas within the street lines.
- d. Yard Waste – Means leaves and grass clippings.

SECTION III Yard Waste Collection

Sweeping, raking, blowing or otherwise placing yard waste that is not containerized at the curb or along the street is only allowed during the seven (7) days

prior to a scheduled and announced collection, and shall not be placed closer than 10 feet from any storm drain inlet. Placement of such yard waste at the curb or along the street at any other time or in any other manner is a violation of this ordinance. If such placement of yard waste occurs, the party responsible for placement of the yard waste must remove the yard waste from the street or said party shall be deemed in violation of this ordinance.

SECTION IV. Enforcement

The provisions of this ordinance shall be enforced by Palmyra Police Department, Palmyra Board of Health, Burlington County Board of Health or any employee of the Borough of Palmyra designated by the Administrator.

SECTION V. Violations and Penalties

Any person(s) who is found to be in violation of the provisions of this ordinance shall be subject to a fine not to exceed \$500.00

SECTION VI. Severability and Repealer

Each section, subsection, sentence, clause and phrase of this ordinance is declared to be an independent section, subsection, sentence, clause and phrase, and the finding or holding of any such portion of this ordinance to be unconstitutional, void, or ineffective for any cause, or reason, shall not affect any other portion of this ordinance .

Any and all ordinances inconsistent with the terms of this ordinance are hereby repealed to the extent of any such inconsistencies.

SECTION VII. Effective Date

This Ordinance shall be in full force and effect from and after its adoption and any publication as may be required by law.

CERTIFICATE OF CLERK

I, Pamela Scott, Acting Clerk in the Borough of Palmyra, County of Burlington, State of New Jersey, do hereby certify the foregoing to be a true and correct copy of an ordinance introduced by the Borough Council at a regular meeting of said Council held on March 6, 2006. And finally adopted on March 22, 2006 after a public hearing.

OUTFALL MAPS



Receiving Waterbody: Stream leading to Delaware River



Receiving Waterbody: Delaware River



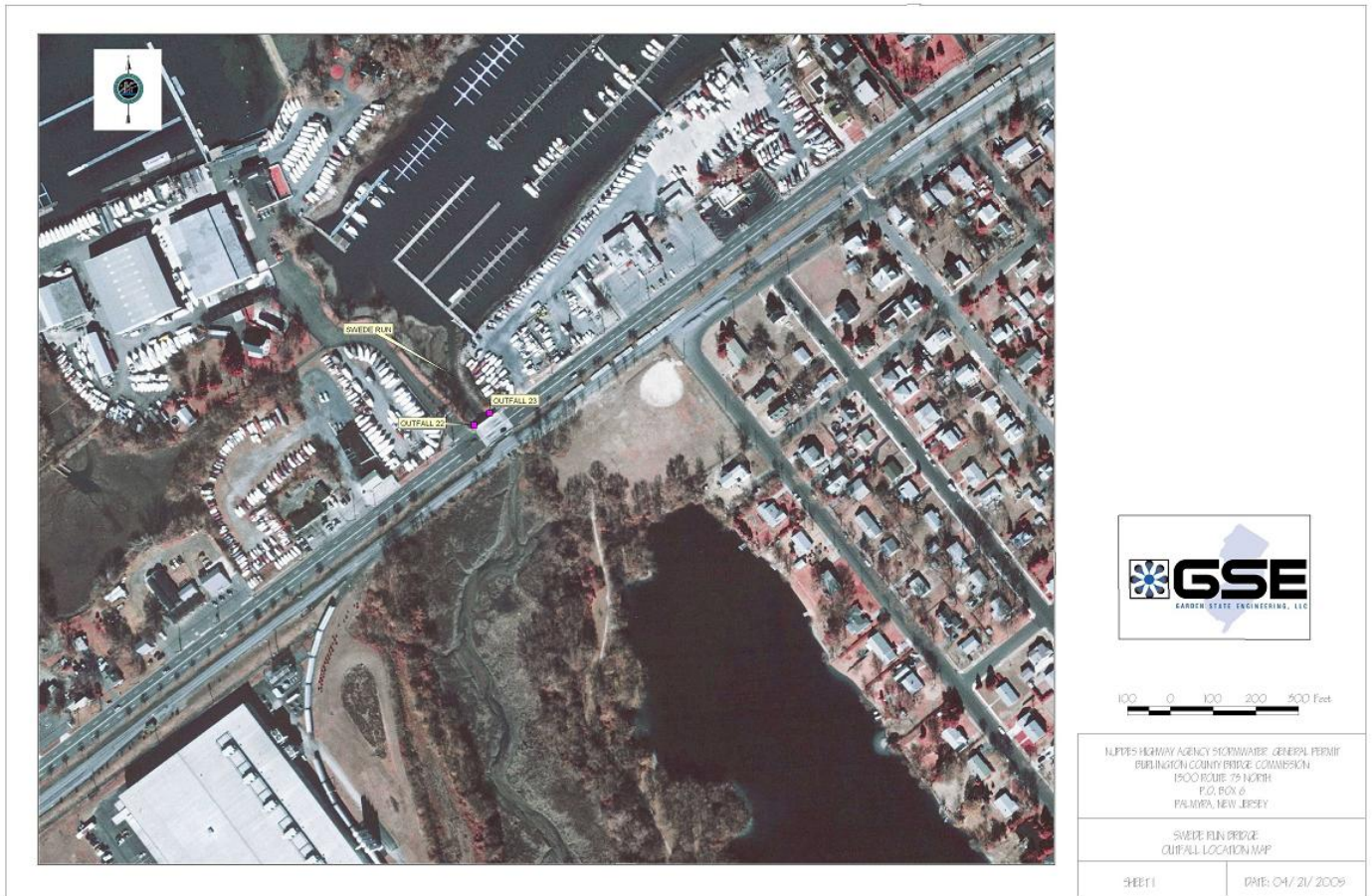
Receiving Waterbody: Rancocas Creek



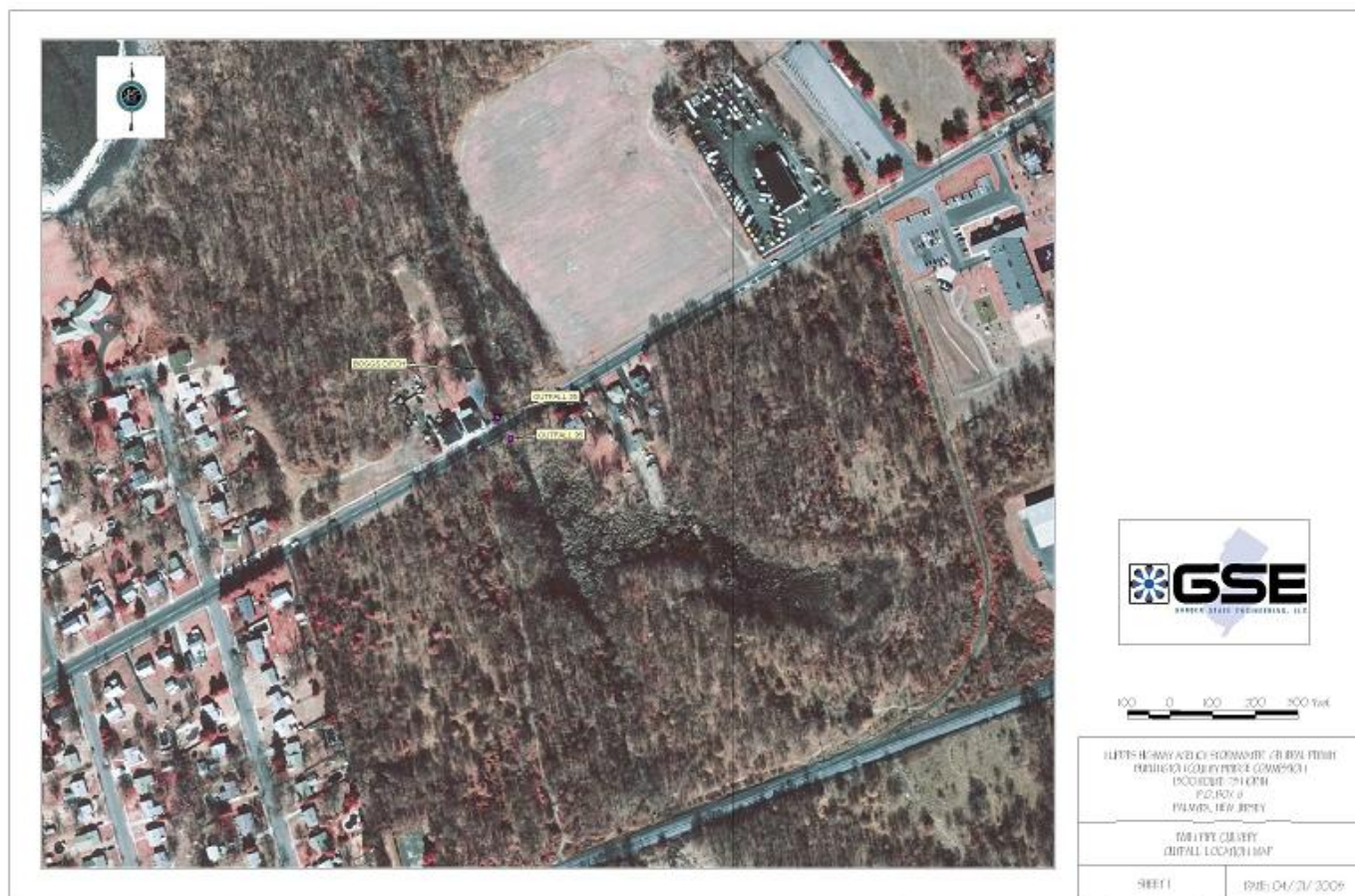
Receiving Waterbody: Pennsauken Creek



Receiving Waterbody: Pompeston Creek



Receiving Waterbody: Swedes Run Creek

**Receiving Waterbody: Boggs Ditch**